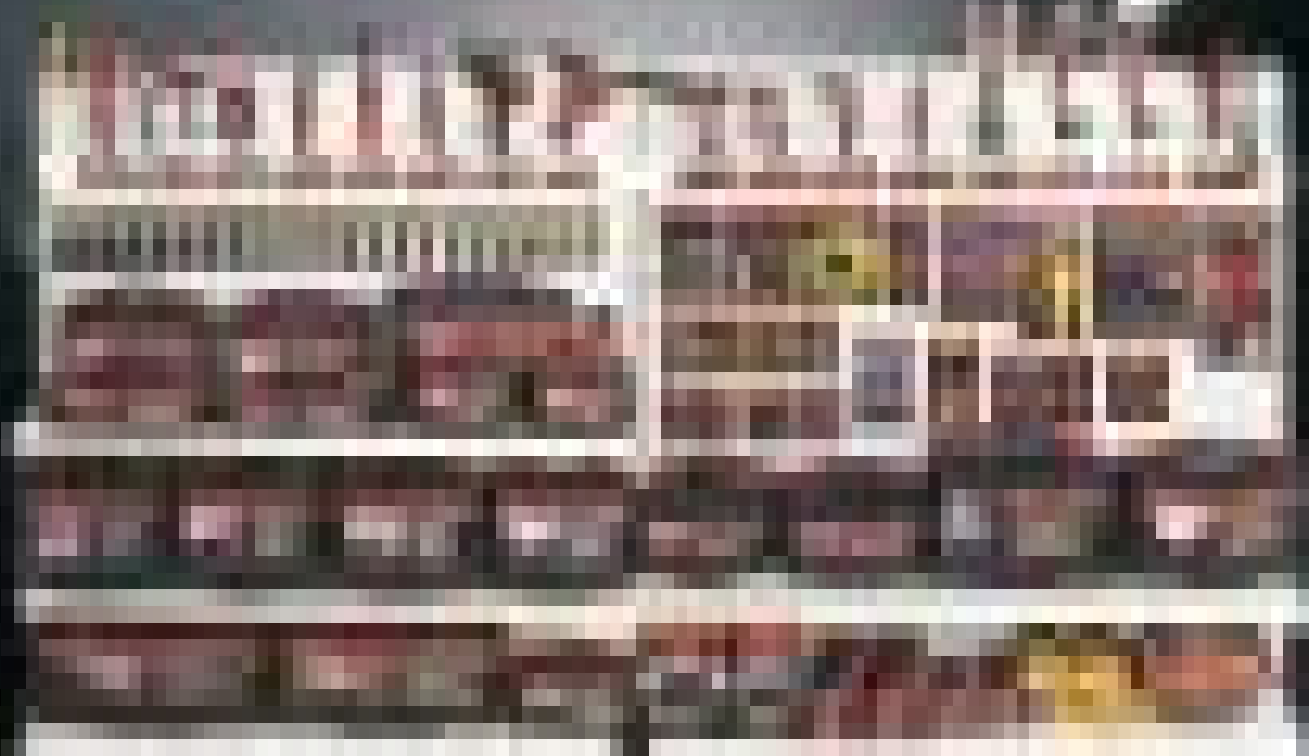


THE HISTORY OF THE CITY OF BOSTON

BY
JOHN B. HENNING

VOLUME I
THE FOUNDING OF THE CITY



BOSTON: PUBLISHED BY
THE BOSTON PUBLIC LIBRARY, ASTOR LENOX AND TILDEN FOUNDATIONS,
78 STATE STREET, BOSTON, MASSACHUSETTS, U.S.A.
1912



AmPro®



PA2000-01 4HP Air Compressor (Oil Lubed)

- Single-cylinder, direct drive
- 13 Gallon air tank
- Oil lubricated for long life
- Delivery: 6.3 SCFM @40PSI
5.0 SCFM @90PSI
- Maximum pressure: 140PSI
- 115V 60Hz 1-Phase 2-Pole
- Thermal overload protection
- Built-in regulator

Specifications:

Power (HP).....	4
Tank Capacity.....	13 Gallons
SCFM @ 40 PSI.....	6.3
SCFM @ 90 PSI.....	5.0



PA2000-05 5HP Air Compressor (Oil Lubed)

- Two-cylinder design for balanced delivery
- 21 Gallon air tank
- Oil lubricated for long life
- Delivery: 8.0 SCFM @40PSI
6.2 SCFM @90PSI
- Maximum pressure: 140PSI
- 115V 60Hz 1-Phase 4-Pole
- Thermal overload protection
- Built-in regulator

Specifications:

Cylinder.....	2
Power (HP).....	5
Tank Capacity.....	21 Gallons
SCFM @ 40 PSI.....	8



AmPro prides in providing supreme “Burgundy Collection” series of quality air tools engineered to deliver power, speed and durability. To ensure longevity and damage-free appearance, we have extended our confidence by having each tool in its own personalized storage case. AmPro air tools are designed for the professional mechanic, and provide superior performance.



AR4120 1/4" Professional Air Ratchet

- Compact head design for trim work, dash boards and smaller engines
- Reaches confined areas where impact wrenches can't reach
- Ball and needle bearing construction

Specifications:

Bolt Capacity	5/16"
Free Speed (RPM).....	240
Max. Torque (Ft-Lb).....	18
Avg. Air Consumption (CFM).....	3
Air Pressure (PSI).....	90
Air Inlet (NPT).....	1/4"
Hose Size (ID).....	3/8"

Repair Kit: A4120K1

Packing: Blow Case



AR4131 3/8" Professional Air Ratchet

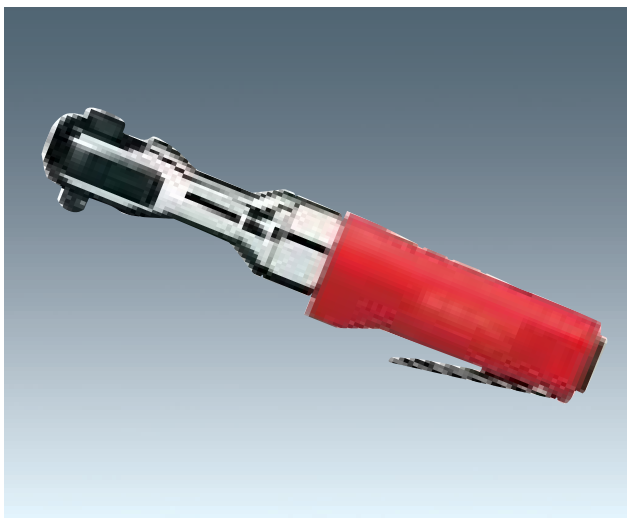
- Ideal tool for exhaust system and body shop repair work
- Ball and needle bearing construction
- Lightweight composite handle for superior comfort and grip

Specifications:

Bolt Capacity	3/8"
Max. Torque (Ft/Lb).....	50
Free Speed (RPM).....	160
Avg. Air Consumption (CFM).....	4
Air Pressure (PSI).....	90
Air Inlet (NPT).....	1/4"
Hose Size (ID).....	3/8"

Repair Kit: A4131K1

Packing: Blow Case



AR4133 3/8" Quick-Release Air Ratchet

- Quick-release design for easy socket removal
- Lightweight composite handle for superior comfort and grip
- Fast run-down to speed up tightening operations

Specifications:

Bolt Capacity	3/8"
Max. Torque (Ft/Lb).....	50
Free Speed (RPM).....	160
Avg. Air Consumption (CFM).....	4
Air Pressure (PSI).....	90
Air Inlet (NPT).....	1/4"
Hose Size (ID).....	3/8"

Repair Kit: A4133K1

Packing: Blow Case



AR3630 3/8" Dr. Butterfly Impact Wrench

- Ideal for small engine work in tight places
- Built-in regulator for complete speed control
- Air inlet swivels 360 degrees
- Single-handed forward and reverse power control

Specifications:

Bolt Capacity	7/16"
Free Speed (RPM).....	11,000
Max. Torque (Ft/Lb).....	75
Avg. Air Consumption (CFM).....	3
Air Pressure (PSI).....	90
Air Inlet (NPT).....	1/4"
Hose Size (ID).....	3/8"

Repair Kit: A3630K1

Packing: Blow Case



AR3638 3/8" Super Duty Impact Wrench

- Single hammer impact mechanism for removing and replacing bolts easily
- More torque, less vibration
- Pistol-grip style, compact and lightweight
- Built-in positive action regulator, handle exhaust

Specifications:

Bolt Capacity.....	7/16"
Free Speed (RPM).....	10,000
Max. Torque (Ft/Lb).....	180
Avg. Air Consumption (CFM).....	2.5
Air Pressure (PSI).....	90
Air Inlet (NPT).....	1/4"
Hose Size (ID).....	3/8"

Repair Kit: A3638K1

Packing: Blow Case



AR3641 1/2" Dr. Standard Impact Wrench

- Ideal tool for general purpose tire and transmission assembly work
- Built-in air regulator for complete speed control
- Vinyl boot protects tool against damage
- Single-handed forward and reverse power control

Specifications:	5/8"
Free Speed (RPM).....	7,000
Max. Torque (Ft-Lb).....	230
Avg. Air Consumption (CFM).....	4.5
Air Pressure (PSI).....	90
Air Inlet (NPT).....	1/4"
Hose Size (ID).....	3/8"

Repair Kit: A3641K1

Packing: Blow Case



AR3651 1/2" Dr. Super Duty Impact Wrench

- Twin Hammer mechanism design for high torque performance
- Super duty wrench rated for industrial use
- Ideal for automotive, truck, and farm applications
- Quality construction, rugged dependability and long life

Specifications:	5/8"
Max. Torque (Ft/Lb).....	400
Free Speed (RPM).....	7,000
Avg. Air Consumption (CFM).....	4
Air Pressure (PSI).....	90
Air Inlet (NPT).....	1/4"
Hose Size (ID).....	3/8"

Repair Kit: A3651K1

Packing: Blow Case



AR3652 1/2" Super Duty Extended Anvil Impact Wrench

- Twin Hammer mechanism design for high torque performance
- Ideal for automotive, truck, and farm applications
- 2" Extended anvil to reach confined spaces
- Quality construction, rugged dependability and long life

Specifications:

Bolt Capacity	5/8"
Max. Torque (Ft/Lb).....	400
Free Speed (RPM).....	7,000
Avg. Air Consumption (CFM).....	4
Air Pressure (PSI).....	90
Air Inlet (NPT).....	1/4"
Hose Size (ID).....	3/8"

Repair Kit: A3652K1

Packing: Blow Case



AR3655 1/2" Ultra Duty Impact Wrench

- New twin Hammer mechanism design for high power, speed, and durability
- Ultra duty to perform the toughest jobs with ease
- One-hand push button forward/reverse
- Adjustable Power Regulator
- Handle exhaust directs air away from work area

Specifications:

Bolt Capacity	3/4"
Max. Torque (Ft/Lb).....	600
Free Speed (RPM).....	6,500
Avg. Air Consumption (CFM).....	4.4
Air Pressure (PSI).....	90
Air Inlet (NPT).....	1/4"
Hose Size (ID).....	3/8"

Repair Kit: A3655K1

Packing: Blow Case



AR3664 3/4" Dr. Super Duty Impact Wrench

- Durable twin-hammer mechanism for engine teardowns general maintenance
- High performance, lightweight and easy to operate
- Steel hammer case provides maximum protection
- Fully adjustable power in forward and reverse

Specifications:

Bolt Capacity.....	1"
Max. Torque (Ft/Lb).....	750
Free Speed (RPM).....	6500
Avg. Air Consumption (CFM).....	7
Air Pressure (PSI).....	90
Air Inlet (NPT).....	1/4"
Hose Size (ID).....	3/8"

Repair Kit: A3664K1



AR3675 1" Lightweight Impact Wrench

- Compact and lightweight design provides power and durability for added performance
- Extended 6" anvil for hard-to-reach applications
- Handle exhaust directs air away from work surface

Specifications:

Bolt Capacity	1-1/2"
Max. Torque (Ft/Lb).....	1,300
Free Speed (RPM).....	3,500
Avg. Air Consumption (CFM).....	7
Air Pressure (PSI).....	90
Air Inlet (NPT).....	1/4"
Hose Size (ID).....	3/8"

Repair Kit: A3675K1



AR3681 1" Dr. Super Duty 6" Anvil Impact Wrench

- Reaches into deep truck wheels easily with the extended anvil
- Designed for high production truck tire changing
- Handle directs air away from work area

Specifications:

Bolt Capacity	1-3/4"
Max. Torque (Ft/Lb).....	1,800
Free Speed (RPM).....	3,500
Avg. Air Consumption (CFM).....	12
Air Pressure (PSI).....	90
Air Inlet (NPT).....	1/2"
Hose Size (ID).....	3/8"

Repair Kit: A3681K1



AR3682 1" Dr. Super Duty Pistol Grip Impact Wrench

- Heavy duty clutch for greater power and durability
- Supported ring socket retainer
- Easy access reverse lever
- Ideal for heavy duty truck tire service work

Specifications:

Bolt Capacity	1-3/4"
Max. Torque (Ft/Lb).....	1,800
Free Speed (RPM).....	3,500
Avg. Air Consumption (CFM).....	12
Air Pressure (PSI).....	90
Air Inlet (NPT).....	3/8"
Hose Size (ID).....	3/8"

Repair Kit: A3682K1



AR3026 1/4" Mini Collet Die Grinder

- Grinds, smooths and finishes rough areas when space is limited
- Ball bearing construction for longer tool life
- Rear exhaust directs air away from work surface
- Throttle lever enables positive speed control

Specifications:

Collet Size.....	1/4"
Free Speed (RPM).....	25,000
Avg. Air Consumption (CFM).....	4
Air Pressure (PSI).....	90
Air Inlet (NPT).....	1/4"
Hose Size (ID).....	3/8"

Repair Kit: A3026K1

Packing: Blow Case



AR3028 Gearless Angle Head Die Grinder and 2" Angle Sander

- Rear exhaust directs air away from work surface
- Perfect for touch-up and production sanding
- Unique gearless mechanism for longer tool life
- Accurately grinds, smooths and finishes rough areas when space is limited

Specifications:

Collet Size.....	1/4"
Free Speed (RPM).....	25,000
Avg. Air Consumption (CFM).....	4 - 6
Air Pressure (PSI).....	90
Air Inlet (NPT).....	1/4"
Hose Size (ID).....	3/8"

Repair Kit: A3028K1

Packing: Blow Case



AR3040 4" Heavy Duty Angle Grinder

- Safety throttle lever to prevents accidental operation
- Powerful 11,000 RPM motor for maximum performance
- Lightweight design to reduce operator fatigue
- Side handle for firm operator control

Specifications:

Wheel Size.....	4"
Free Speed (RPM).....	11,000
Avg. Air Consumption (CFM).....	6
Air Pressure (PSI).....	90
Air Inlet (NPT).....	1/4"
Hose Size (ID).....	3/8"

Repair Kit: A3040K1

Packing: Blow Case



AR4243 Orbital "Jitterbug" Sander

- Heavy duty balanced ball-bearing construction
- Automatic release throttle lever
- Locking abrasive clamp for positive sand paper retention
- Constant 3/16" stroke for a smooth, fine finish

Specifications:

Orbital Stroke.....	3/16"
Pad Size.....	3-2/3" x 9"
Free Speed (RPM).....	8,000
Avg. Air Consumption (CFM).....	4
Air Pressure (PSI).....	90
Air Inlet (NPT).....	1/4"
Hose Size (ID).....	3/8"

Repair Kit: A4243K1

Packing: Blow Case



AR4249 Dual Piston Straight Line Sander

- Synchronized dual action pistons for balanced & smooth operation
- Long length pad for precise leveling
- Quick-action paper clamps
- Automatic release trigger with positive stop action

Specifications:

Pad Size.....	2-3/4" x 17-1/2"
Stroke Length.....	1"
Stroke Per Min (SPM).....	2,100
Avg. Air Consumption (CFM).....	8
Air Pressure (PSI).....	90
Air Inlet (NPT).....	1/4"
Hose Size (ID).....	3/8"

Repair Kit: A4249K1

Packing: Blow Case



AR4261 6" Heavy Duty Dual Action Sander

- Balanced ball-bearing construction for vibration-free performance
- Automatic release throttle lever with positive action
- Built-in regulator for positive speed control

Specifications:

Pad Size.....	6"
Spindle/Thread.....	5/16" - 24
Free Speed (RPM).....	10,000
Avg. Air Consumption (CFM).....	6.5
Air Pressure (PSI).....	90
Air Inlet (NPT).....	1/4"
Hose Size (ID).....	3/8"

Repair Kit: A4261K1

Packing: Blow Case



AR4265 6" Palm Grip Orbital Sander

- Orbital action assures final swirlless finish
- Lightweight, vibration free performance
- Balanced ball bearing construction
- Contoured palm-grip handle for one-hand operation
- Variable speed throttle lever for positive speed control

Specifications:

Orbital Stroke.....	1/5"
Free Speed (RPM).....	9,000-10,000
Avg. Air Consumption (CFM).....	6
Air Pressure (PSI).....	90
Pad Size	6"
Air Inlet (NPT).....	1/4"
Hose Size (ID).....	3/8"

Repair Kit: A4265K1



AR4270 7" Horizontal Angle Sander

- Heavy duty motor for tough jobs
- Built-in air regulator for complete speed control
- Contoured lever throttle control for positive stop action
- Ball bearing construction for long life

Specifications:

Spindle/Thread Size.....	5/8" - 11"
Pad Size	7"
Free Speed (RPM).....	4,500
Avg. Air Consumption (CFM).....	12
Air Pressure (PSI).....	90
Air Inlet (NPT).....	1/4"
Hose Size (ID).....	3/8"

Repair Kit: A4270K1



AR2431 3/8" Reversible Air Drill

- Durable idler planetary gears prolong air tool life
- Positive action trigger for variable speed control
- Ideal for general heavy duty drilling, engine work and other auto body applications

Specifications:

Drill Capacity.....	3/8"
Spindle/Thread Size.....	3/8" - 24
Free Speed (RPM).....	1,800
Avg. Air Consumption (CFM).....	4
Air Pressure (PSI).....	90
Air Inlet (NPT).....	1/4"
Hose Size (ID).....	3/8"

Repair Kit: A2431K1

Packing: Blow Case



AR2440 1/2" Heavy Duty Reversible Drill

- Side handle for extra control and comfort
- Double reduction gears for exceptional power
- Handle exhaust directs air away from work surface
- Ideal for drilling, wire brushing, cylinder honing, hole sawing and other heavy duty applications

Specifications:

Drill Capacity.....	1/2"
Spindle/Thread Size.....	3/8" - 24
Free Speed (RPM).....	800
Avg. Air Consumption (CFM).....	4
Air Pressure (PSI).....	90
Air Inlet (NPT).....	1/4"
Hose Size (ID).....	3/8"

Repair Kit: A2440K1

Packing: Blow Case



AR2432 3/8" Angle Head Reversible Air Drill

- Compact design for close clearance operation
- Variable speed lever throttle adds precision for all applications
- Rear exhaust keeps exhaust air away from work area
- Forward/Reverse control locks in both positions
- Lightweight for fatigue free handling

Specifications:

Drill Capacity.....	3/8"
Free Speed (RPM).....	1,400
Avg. Air Consumption (CFM).....	4
Air Pressure (PSI).....	90
Air Inlet (NPT).....	1/4"
Hose Size (ID).....	3/8"

Repair Kit: A2432K1

Packing: Blow Case



AR3101 Professional Air Hammer

- Includes five industrial grade chisels
- Ideal tool for cutting applications, exhaust systems and general repair work
- Quick change spring retainer for added safety

Specifications:

Bore Size.....	3/4"
Chisel Shank.....	0.401"
Blow per Min. (BPM).....	3,200
Stroke Length.....	2-5/8"
Avg. Air Consumption (CFM).....	4
Air Pressure (PSI).....	90
Air Inlet (NPT).....	1/4"

Repair Kit: A3101K1

Packing: Blow Case



AR6025 HVLP Gravity Feed Spray Gun w/Regulator

- Regulator with pressure gauge
- High Volume, Low Pressure for increased efficiency
- Environmental regulations compliant

Specifications:

Spray Pattern.....	8" - 10"
Air Pressure (PSI).....	29 - 50
Needle Nozzle.....	1.5mm
Cup Capacity.....	20fl. oz
Avg. Air Consumption (CFM).....	6 - 8
Fluid Inlet (NPS).....	M16 x 1.5P
Air Inlet (NPS).....	1/4"
Hose Size (ID).....	1/4"

Optional needle/nozzle assemblies:

- A6025-A** (1.3mm), **A6025-B** (1.5mm),
A6025-C (1.7mm), **A6025-D** (1.9mm),
A6025-E (2.2mm), and also **A6025-G** (20 oz. cup)

Repair Kit: A6025K2

Packing: Blow Case



AR6029 Mini Touch-Up HVLP Spray Gun w/Regulator

- Regulator with pressure gauge
- High Volume, Low Pressure for increased efficiency
- Environmental regulations compliant

Specifications:

Spray Pattern.....	3 - 4"
Air Pressure (PSI).....	29 - 43
Needle Nozzle.....	1.0mm
Cup Capacity.....	200cc
Avg. Air Consumption (CFM).....	2.5 - 2.7
Fluid Inlet.....	M14 x 1.0P
Air Inlet (NPS).....	1/4"
Hose Size (ID).....	1/4"

Optional needle/nozzle assemblies:

- A6029-A** (0.8mm), **A6029-B** (1.0mm),
A6029-C (1.2mm)

Repair Kit: A6029K2

Packing: Blow Case



AR6050 Production Spray Gun

- Designed for automotive and production applications
- For use with acrylics, enamels, lacquers, primers, rimers, shellacs, stains and varnishes
- Stainless steel needle and fluid nozzle
- 1 qt. heavy duty aluminum siphon feed cup

Specifications:

Spray Pattern.....	8"-10"
Air Pressure (PSI).....	50-70
Tip Nozzle.....	1.8mm
Cup Capacity.....	1Qt
Avg. Air Consumption (CFM).....	8.5-12
Fluid Inlet	3/8"
Air Inlet (NPS).....	1/4"
Hose Size (ID).....	3/8"

Repair Kit: A6050K1

Packing: Blow Case



AR2300 Utility Cut-Off Tool

- Built-in speed regulator and throttle lever
- Steel spark guard rotates 360 degrees for safety
- Designed to cut through muffler hose clamps, rusted bolts, fiberglass, sheet metal, etc

Specifications:

Max. Cutting Capacity.....	3/4"
Wheel Dia.....	3"
Free Speed (RPM).....	20,000
Avg. Air Consumption (CFM).....	4
Air Pressure (PSI).....	90
Air Inlet (NPT).....	1/4"
Hose Size (ID).....	3/8"

Repair Kit: A2300K1

Packing: Blow Case



AR2307 Heavy Duty Air Nibbler

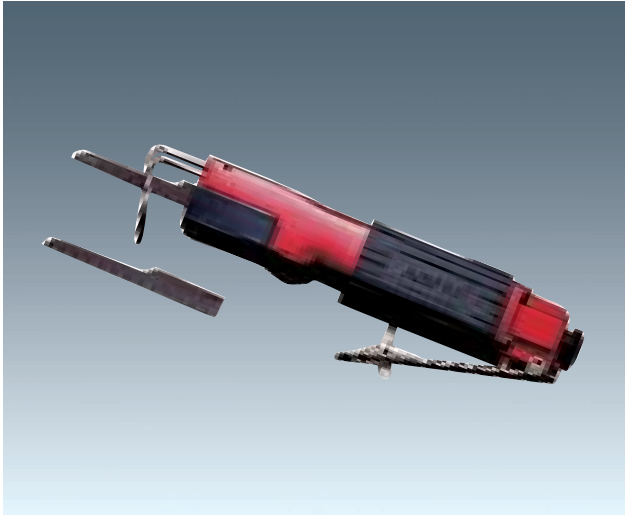
- Lever throttle for positive speed control
- Cuts metal and plastic sheets
- Cuts up to 18 gauge mild steel
- Adjustable die guide for forward, backward, right or left cutting

Specifications:

Max. Cutting Capacity (Gauge).....	18
Stroke Per Min. (SPM).....	2,100
Avg. Air Consumption (CFM).....	4
Air Pressure (PSI).....	90
Air Inlet (NPT).....	1/4"
Hose Size (ID).....	3/8"

Repair Kit: A2307K1

Packing: Blow Case



AR2311 Reciprocating Air Body Saw

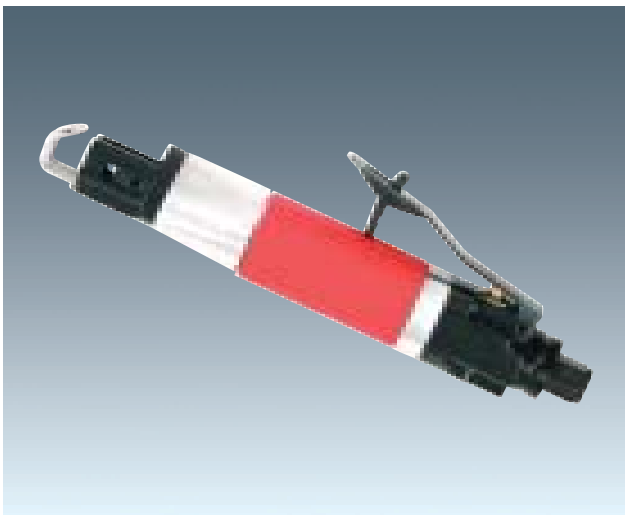
- Ideal for body shop repair, muffler and exhaust work
- Cuts all types of aluminum, plastic, fiberglass and sheet metal
- Cuts intricate shapes and tight radius curves

Specifications:

Max. Cutting Capacity(Gauge).....	16
Stroke Length.....	3/8"
Stroke Per Min. (SPM).....	9,000
Avg. Air Consumption (CFM).....	6
Air Pressure (PSI).....	90
Air Inlet (NPT).....	1/4"
Hose Size (ID).....	3/8"

Repair Kit: A2311K1

Packing: Blow Case



AR2314 Industrial Air Body Saw

- Ideal for body, exhaust, and muffler work
- Cuts all types of aluminum, plastic, fiberglass and sheet metal
- Cuts intricate, versatile shapes and tight curves
- Cushioned grip hand for added control and comfort

Specifications:

Max. Cutting Capacity (Gauge).....	12
Stroke Length	3/8"
Stroke Per Min (SPM).....	5,000
Avg. Air Consumption CFM).....	4
Air Pressure (PSI).....	90
Air Inlet (NPT).....	1/4"
Hose Size (ID).....	3/8"

Repair Kit: A2314K1

Packing: Blow Case



AR3710 Air Grease Gun (400cc)

- Lubrication for automotive and industrial work
- Three-way grease loading: cartridge, filler pump and bulk
- Air vent valve to release trapped air pockets from the tube
- Delivers 1,200 to 6,000 PSI at nozzle to penetrate the most stubborn grease fitting

Specifications:

Standard cartridge (OZ).....	14
Avg. Air Consumption (CFM).....	6
Air Pressure (PSI).....	30 - 150
Air Inlet (NPT).....	1/4"
Hose Size (ID).....	3/8"

Repair Kit: A3710K1

Packing: Blow Case



AR3714 Gravity Feed SandBlaster

- Compact, portable sandblasters with large capacity
- Gravity feed design offers uninterrupted and consistent material flow
- Gravity feed design for high operating efficiency
- Pistol grip for easy and comfortable control

Specifications:

Nozzle Size.....	2-15/16" L x 7/32" Dia.
Case Capacity (oz)	18
Avg. Air Consumption (CFM).....	7
Air Pressure (PSI).....	90
Air Inlet (NPT).....	1/4"
Hose Size (ID).....	3/8"

Repair Kit: A3714K1



AR2654 3/8" Air Filter-Regulator

- Combination of filter and regulator in one unit to protect air tool from moisture, rust and friction
- Provides clean, dry, regulated compressed air with accurate control and fast response
- Improves spray painting performance
- Regulator controls air pressure from air compressor
- Filter keeps water, dirt and other particles from entering air line

Specifications:

Regulating Range (PSI).....	05 - 150
Ambient Temperature.....	5 - 50C
Max. Working Pressure (PSI).....	150
Pressure Gauge (kg/Cm2).....	1.0 - 7



AR2664 3/8" Air Filter-Regulator-Lubricator

- Set features filter, regulator and lubricator to insure protection from moisture, rust and friction
- Filter for corrosion prevention The filter also removes abrasive particles, preventing excessive wear to the air tool
- Regulator for accurate airflow control
- Adjustable lubricator for increased air tool life

Specifications:

Filtration (Micron).....	5 - 50
Regulating Range (PSI).....	0 - 150
Ambient Temperature.....	5 - 50C
Max. Working Pressure (PSI).....	150
Pressure Gauge (kg/Cm2).....	1.0 - 7



A1001 3" Cutoff Wheel Set

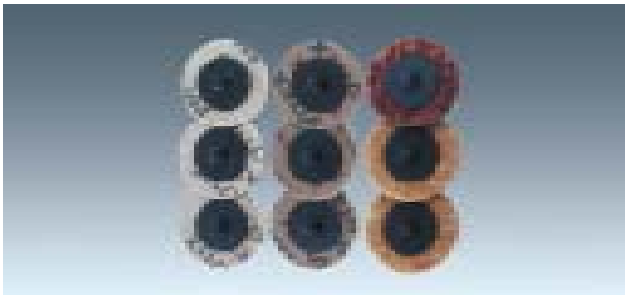
A1002 50pc 3" Cutoff Wheels

- For use with AmPro AR2300 Utility Cut-Off Tool
- 3" diameter, 1/16" thickness
- 3/8" arbor hole fits all brands of air cut-off tools
- For use in cutting sheet metal, metal hardware, or fasteners



A1101 10pc Grinding Stone Set

- For use with AmPro AR3026 and AR3028 Air Die Grinders
- Shaped to suit all grinding applications



A1705 9pc 2" Air Sanding Pad Set

- For use with AmPro AR3028 Gearless Angle Head Die Grinder & 2" Sander
- Includes 6pc 2" sanding disc pads and 3pc 2" surface conditioning disc pads
- Idea for paint and body shops



A1426 Brass Air Regulator 1/4" NPT

- Standard 1/4" male and 1/4" female fittings
- Knurled grip for precise airflow adjustment
- Corrosion resistant brass construction
- Increases or decreases air pressure as desired



A1428 Oil & Water Separator

- Separates water from compressed air.
- Includes drain valve for periodic draining
- Maximum in-line pressure 150 PSI
- Removes water and oil condensates
- Provides uniform spray painting results



A1429 In-Line Mini Oiler

- Lubricates air tools to insure durability
- Attaches between tool and air hose to lubricate tool during use
- Not to be used for spray painting tools



A1430 Tire Inflator w/ Gauge

- 10-120 lbs pressure gauge with easy-to-read scale and 2 lbs increments
- 12" heavy duty rubber air hose, 1/4" female NPT
- Cast aluminum alloy body with heavy duty valve to resist corrosion



A1435 Brass Tire Chuck

- Corrosion resistant, durable brass construction
- Angled head with rubber gasket for easy access and leak-free seating on type valves
- 1/4" Female NPT



A1436 Dual Head Tire Chuck (1/4" Female N.P.T.)

- Corrosion resistant brass tube
- Angled dual head
- Rubber gasket ensures an airtight seal



A1437 Safety Air Blow Gun w/ Extended Nozzle

- Extended nozzle with safety restricted air flow tip
- Produces side vent shield of air that confines material being blown, keeping it away from face
- Trigger regulated air flow



A1454 Air Duster

- Easily cleans and removes dust from equipment
- Impact resistant gun body and stainless steel spring
- Seamless air pipe to prevent air leakage
- Operating pressure: 90 - 100 PSI



A2570 5pc Brass Air Coupler Set

- 1pc - 1/4" NPT female coupler.
- 3pc - 1/4" NPT male nipple.
- 1pc - 1/4" NPT female nipple



A2540 1/4" NPT Female Coupler

- Brass to resist corrosion
- Lock release sleeves
- Hex nut for secure line attachment



A2543 1/4" NPT Male Coupler

- Brass to resist corrosion
- Lock release sleeves
- Hex nut for secure line attachment



A2509 1/4" NPT Swivel Connector

- Keeps air line straight without kinking
- 360° rotation at both points for complete tool maneuverability



A1460 18pc Air Tool Accessory Kit
Complete Kit for Professional or Home Use

- Includes the most popular air tool accessories to enhance productivity
- Corrosion resistant brass couplers & connectors



A1439 Spray Gun Sand

- For use with AmPro AR6025 and AR6029 Air Spray Guns



A1440 Air Regulator w/Gauge

- Includes a 0-160 PSI pressure gauge
- Provides fine air control for spray gun and air tools
- Regulate constant level of air pressure



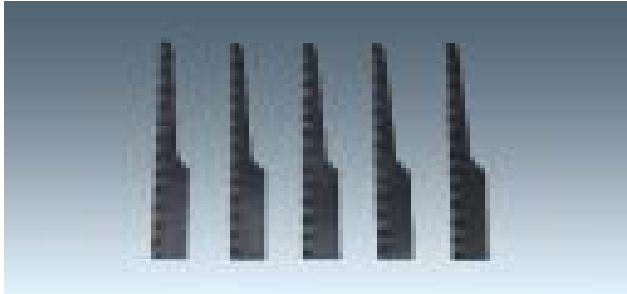
A1414 12" Air Grease Gun
Flexible Hose w/coupler

- Ideal for lubricating machine, vehicle, farm and garden-equipment
- Heavy-duty flexible hose reaches confined spaces
- Designed for use with air-powered grease guns



A1441 Teflon Tape (1/2"x 260")

- Adds extra seal at threaded joints



A1424 5pc Saw Blade set (24 Teeth)

A1425 5pc Saw Blade set (32 Teeth)

- For use with AmPro AR2311 and AR2314 Air Body Saw
- High grade bi-metal blade



A3531 25Ft 3/8" Rubber Air Hose

A3532 50Ft 3/8" Rubber Air Hose

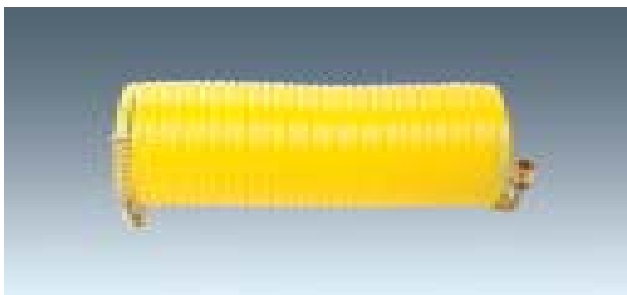
- 3/8" I.D. hose with 1/4" NPT brass fittings
- Up to 250 PSI working pressure
- Resists to oil, kink, abrasion, weather and ozone



A3533 3/8" x 25' PVC Air Hose

A3534 3/8" x 50' PVC Air Hose

- PVC Construction
- Double strand polyester braiding
- 1/4" NPT solid brass fittings
- 300 PSI maximum working pressure



A3221 1/4" 25Ft Recoil Air Hose

A3222 1/4" 50Ft Recoil Air Hose

- 1/4" NPT Brass end fittings
- Self-retracting nylon hose
- Chemical and corrosion resistant
- 200 PSI maximum air pressure
- For use with all air tools and related equipment



Polyurethane Coiled Hose (Braided)

• Polyurethane resin nylon braided hose

A3340	1/4" x 15Ft	A3343	3/8" x 15Ft
A3341	1/4" x 25Ft	A3344	3/8" x 25Ft

- Brass swivel end fittings with plastic protection guard
- 200 PSI maximum working pressure



A1702 5pc Air Chisel Set

- For use with AmPro AR3101 Professional Air Hammer
- Chrome Molybdenum steel, heat treated
- Standard 0.401" shank
- Includes: Weld Buster, Cold Chisel, Tapered Punch, and Round Nose Panel



A1418 3/8" Keyless Drill Chuck

A1419 1/2" Keyless Drill Chuck

- High quality chuck constructed for fast and easy bit changing
- For use with AmPro AR2431 3/8" Air Drill and AR2440 1/2" Air Drill



A1412 Quick Change Retainer Spring

- For use with AmPro AR3101 Professional Air Hammer
- Safety chisel holding device
- Heavy duty spring with remover lever



A1405 6" Sander Pad

- For use with AmPro AR4261 6" Dual Action Sander
- Max operating speed 12,000 R.P.M.
- Size 5/16" x 24 threads



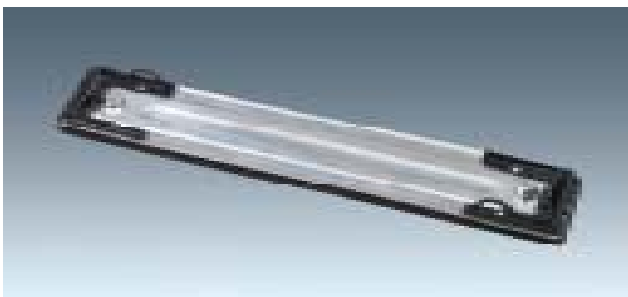
A1404 6" Sander Pad

- For use with AmPro AR4265 6" Palm Sander
- Lightweight, low profile with tapered edges
- Max operating speed 12,000 R.P.M.
- Size 5/16" x 24 threads



A1407 Jitterbug Sander Pad

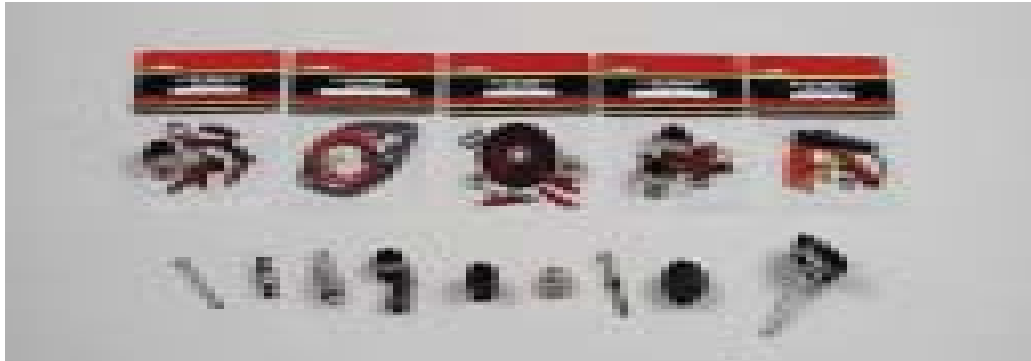
- For use with AmPro AR4243 Jitterbug Sander



A1401 Straight Line Sander Pad

- For use with AmPro AR4249 Straight Line Sander

Repair Kits and Spare Parts



AmPro offers comprehensive repair kits and replacement parts facilities.
Repair kits consist of popular wear and tear items.

Repair Kits:

To order repair kits: Suffix "K" to the model number. For example, the repair kit for model #AR2300 is #A2300K. Repair Kits may be purchased at AmPro Service Centers, or authorized AmPro dealers.

Replacement Parts:

To order replacement parts: Refer to the exploded tool diagram which accompanies each airtool. Each part has an index number. For example model #AR2300 and index #1 refers to part# AR2300-01. Replacement parts maybe purchased at AmPro Service Centers.

For further information, call the AmPro Service Center at the toll free number : 888-558-2958 (U.S.A.), or
Email: service@amprottools.net



3/8" Dr. SAE / METRIC Sockets (Chrome Molybdenum Steel)

SAE			METRIC		
Impact	Deep	Size	Impact	Deep	Size
A4710	A5410	5/16"	A4506	A4906	6mm
A4711	A5411	3/8"	A4507	A4907	7mm
A4712	A5412	7/16"	A4508	A4908	8mm
A4713	A5413	1/2"	A4509	A4909	9mm
A4714	A5414	9/16"	A4510	A4910	10mm
A4715	A5415	5/8"	A4511	A4911	11mm
A4716	A5416	11/16"	A4512	A4912	12mm
A4717	A5417	3/4"	A4513	A4913	13mm
A4718	A5418	13/16"	A4514	A4914	14mm
A4719	A5419	7/8"	A4515	A4915	15mm
			A4516	A4916	16mm
			A4517	A4917	17mm
			A4518	A4918	18mm
			A4519	A4919	19mm
			A4520	A4920	20mm
			A4521	A4921	21mm
			A4522	A4922	22mm

1/2" Dr. SAE / METRIC Sockets (Chrome Molybdenum Steel)

SAE			METRIC		
Impact	Deep	Size	Impact	Deep	Size
A4750	A5450	5/16"	A4558	A4958	8mm
A4751	A5451	3/8"	A4559	A4959	9mm
A4752	A5452	7/16"	A4560	A4960	10mm
A4753	A5453	1/2"	A4561	A4961	11mm
A4754	A5454	9/16"	A4562	A4962	12mm
A4755	A5455	5/8"	A4563	A4963	13mm
A4756	A5456	11/16"	A4564	A4964	14mm
A4757	A5457	3/4"	A4565	A4965	15mm
A4758	A5458	13/16"	A4566	A4966	16mm
A4759	A5459	7/8"	A4567	A4967	17mm
A4760	A5460	15/16"	A4568	A4968	18mm
A4761	A5461	1"	A4569	A4969	19mm
A4762	A5462	1-1/16"	A4570	A4970	20mm
A4763	A5463	1-1/8"	A4571	A4971	21mm
A4764	A5464	1-3/16"	A4572	A4972	22mm
A4765	A5465	1-1/4"	A4573	A4973	23mm
			A4574	A4974	24mm
			A4575	A4975	25mm
			A4576	A4976	26mm
			A4577	A4977	27mm
			A4578	A4978	28mm
			A4579	A4979	29mm
			A4580	A4980	30mm
			A4582	A4982	32mm



AmPro®

Power Tools - Air Impact Sockets



3/4" Dr. SAE / METRIC Sockets (Chrome Molybdenum Steel)

SAE			METRIC		
Impact	Deep	Size	Impact	Deep	Size
A5120	A5520	11/16"	A4637	A5037	17mm
A5121	A5521	3/4"	A4638	A5038	18mm
A5122		25/32"	A4639	A5039	19mm
A5123	A5523	13/16"	A4640	A5040	20mm
A5124	A5524	7/8"	A4641	A5041	21mm
A5125	A5525	15/16"	A4642	A5042	22mm
A5126	A5526	1"	A4643	A5043	23mm
A5127	A5527	1-1/16"	A4644	A5044	24mm
A5128	A5528	1-1/8"	A4645	A5045	25mm
A5129	A5529	1-3/16"	A4646	A5046	26mm
A5130	A5530	1-1/4"	A4647	A5047	27mm
A5131	A5531	1-5/16"	A4648	A5048	28mm
A5132	A5532	1-3/8"	A4649	A5049	29mm
A5133	A5533	1-7/16"	A4650	A5050	30mm
A5134	A5534	1-1/2"	A4651	A5051	31mm
A5135	A5535	1-9/16"	A4652	A5052	32mm
A5136	A5536	1-5/8"	A4653	A5053	33mm
A5137	A5537	1-11/16"	A4654	A5054	34mm
A5138	A5538	1-3/4"	A4655	A5055	35mm
A5139	A5539	1-13/16"	A4656	A5056	36mm
A5140	A5540	1-7/8"	A4658	A5058	38mm
A5141	A5541	1-15/16"	A4660	A5060	40mm
A5142	A5542	2"	A4661	A5061	41mm
A5143		2-1/16"		A5062	42mm
A5144		2-1/8"	A4663	A5063	43mm
A5145		2-3/16"	A4665	A5065	45mm
A5146		2-1/4"	A4666	A5066	46mm
A5147		2-5/16"	A4668	A5068	48mm
A5148		2-3/8"	A4670	A5070	50mm
A5149		2-1/2"	A4672		52mm
A5150		2-5/8"	A4674		54mm
A5151		2-3/4"	A4675		55mm
			A4677		57mm
			A4678		58mm
			A4679		59mm
			A4680		60mm
			A4683		63mm
			A4685		65mm
			A4690		70mm



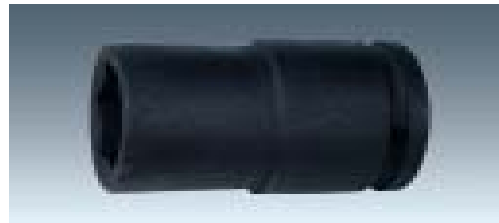
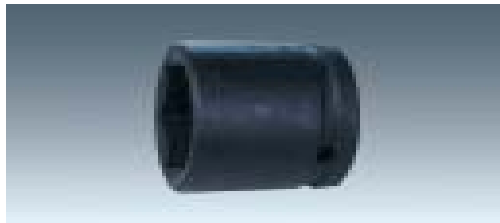
3/4" Dr. SAE / METRIC "Square" Sockets (Chrome Molybdenum Steel)

SAE			METRIC		
Impact	Deep	Size	Impact	Deep	Size
A5120S	A5520S	11/16"	A4637S	A5037S	17mm
A5121S	A5521S	3/4"	A4639S	A5039S	19mm
A5123S	A5523S	13/16"	A4641S	A5041S	21mm



1" Dr. SAE / METRIC "Square" Sockets (Chrome Molybdenum Steel)

SAE			METRIC		
Impact	Deep	Size	Impact	Deep	Size
A5320S	A5720S	11/16"	A4817S	A5217S	17mm
A5321S	A5721S	3/4"	A4819S	A5219S	19mm
A5323S	A5723S	13/16"	A4821S	A5221S	21mm



1" Dr. SAE / METRIC Sockets (Chrome Molybdenum Steel)

SAE			METRIC		
Impact	Deep	Size	Impact	Deep	Size
A5320	A5720	11/16"	A4817	A5217	17mm
A5321	A5721	3/4"	A4819	A5219	19mm
A5323	A5723	13/16"	A4821	A5221	21mm
A5324	A5724	7/8"	A4822	A5222	22mm
A5325	A5725	15/16"	A4823	A5223	23mm
A5326	A5726	1"	A4824	A5224	24mm
A5327	A5727	1-1/16"	A4825	A5225	25mm
A5328	A5728	1-1/8"	A4826	A5226	26mm
A5329	A5729	1-3/16"	A4827	A5227	27mm
A5330	A5730	1-1/4"	A4828	A5228	28mm
A5331	A5731	1-5/16"	A4829	A5229	29mm
A5332	A5732	1-3/8"	A4830	A5230	30mm
A5333	A5733	1-7/16"	A4832	A5232	32mm
A5334	A5734	1-1/2"	A4833	A5233	33mm
A5335	A5735	1-9/16"	A4834	A5234	34mm
A5336	A5736	1-5/8"	A4835	A5235	35mm
A5337	A5737	1-11/16"	A4836	A5236	36mm
A5338	A5738	1-3/4"	A4838	A5238	38mm
A5339	A5739	1-13/16"	A4840		40mm
A5340	A5740	1-7/8"	A4841	A5241	41mm
A5341	A5741	1-15/16"	A4843	A5243	43mm
A5342	A5742	2"	A4846	A5246	46mm
A5343	A5743	2-1/16"	A4848	A5248	48mm
A5344	A5744	2-1/8"	A4850	A5250	50mm
A5345	A5745	2-3/16"	A4852	A5252	52mm
A5346	A5746	2-1/4"	A4854	A5254	54mm
A5347	A5747	2-5/16"	A4855	A5255	55mm
A5348	A5748	2-3/8"	A4857	A5257	57mm
A5350	A5750	2-1/2"	A4858	A5258	58mm
A5352	A5752	2-5/8"	A4859	A5259	59mm
A5354	A5754	2-3/4"	A4860	A5260	60mm
A5355		2-13/16"	A4863	A5263	63mm
	A5756	2-7/8"	A4865	A5265	65mm
A5357	A5757	2-15/16"	A4870	A5270	70mm
A5358	A5758	3"	A4875	A5275	75mm
	A5759	3-1/16"	A4880	A5280	80mm
A5360	A5760	3-1/8"	A4885	A5285	85mm
A5362		3-3/8"	A4890	A5290	90mm
A5363		3-1/2"			



Impact Universal Joints (Chrome Molybdenum steel)

- A5800** 3/8" Dr. Universal Joint
- A5801** 1/2" Dr. Universal Joint
- A5802** 3/4" Dr. Universal Joint
- A5803** 1" Dr. Universal Joint
- A5805** 1-1/2" Dr. Universal Joint



Impact Socket Adaptors (Chrome Molybdenum steel)

- A5810** 3/8" Dr. (F) x 1/4" (M) Adaptor
- A5811** 3/8" Dr. (F) x 1/2" (M) Adaptor
- A5812** 1/2" Dr. (F) x 3/8" (M) Adaptor
- A5813** 1/2" Dr. (F) x 3/4" (M) Adaptor
- A5814** 3/4" Dr. (F) x 1/2" (M) Adaptor
- A5815** 3/4" Dr. (F) x 1" (M) Adaptor
- A5816** 1" Dr. (F) x 3/4" (M) Adaptor
- A5817** 1" Dr. (F) x 1-1/2" (M) Adaptor
- A5818** 1-1/2" Dr. (F) x 1" (M) Adaptor
- A5819** 1-1/2" Dr. (F) x 2-1/2" (M) Adaptor



Impact Extension Bars (Chrome Molybdenum steel)

- A5830** 3/8" Dr. x 3" (75mm) Extension Bar
- A5831** 3/8" Dr. x 6" (150mm) Extension Bar
- A5832** 1/2" Dr. x 3" (75mm) Extension Bar
- A5833** 1/2" Dr. x 5" (125mm) Extension Bar
- A5834** 1/2" Dr. x 10" (250mm) Extension Bar
- A5836** 3/4" Dr. x 4" (100mm) Extension Bar
- A5837** 3/4" Dr. x 6" (150mm) Extension Bar
- A5838** 3/4" Dr. x 8" (200mm) Extension Bar
- A5839** 3/4" Dr. x 10" (250mm) Extension Bar
- A5840** 1" Dr. x 4" (100mm) Extension Bar
- A5841** 1" Dr. x 6" (150mm) Extension Bar
- A5842** 1" Dr. x 8" (200mm) Extension Bar
- A5843** 1" Dr. x 10" (250mm) Extension Bar
- A5845** 1-1/2" Dr. x 10" (250mm) Extension Bar
- A5846** 1-1/2" Dr. x 15" (380mm) Extension Bar
- A5847** 1-1/2" Dr. x 20" (500mm) Extension Bar



Impact Socket Sets (Chrome Molybdenum Steel)



A5600 8pc 3/8" Dr. Impact Socket Set
5/16", 3/8", 7/16", 1/2"
9/16", 5/8", 11/16", 3/4"

A5601 8pc 3/8" Dr. Impact Socket Set
8, 10, 11, 12, 13, 14, 17, 19mm



A5602 8pc 3/8" Dr. Deep Impact Socket Set
5/16", 3/8", 7/16", 1/2"
9/16", 5/8", 11/16", 3/4"

A5603 8pc 3/8" Dr. Deep Impact Socket Set
8, 10, 11, 13, 14, 16, 17, 19mm



A5610 9pc 1/2" Dr. Impact Socket Set
3/8", 7/16", 1/2", 9/16", 5/8"
11/16", 3/4", 13/16", 7/8"

A5611 9pc 1/2" Dr. Impact Socket Set
11, 12, 13, 14, 16, 17, 19, 21, 22mm

A5612 10pc 1/2" Dr. Deep Impact Socket Set

7/16", 1/2", 9/16", 5/8", 11/16"
3/4", 13/16", 7/8", 15/16", 1"

A5613 10pc 1/2" Dr. Deep Impact Socket Set
11, 12, 13, 14, 16, 17, 19, 21, 22, 24mm

A5620 8pc 3/4" Dr. Impact Socket Set
1", 1-1/16", 1-1/18", 1-1/4", 1-5/16",

1-3/8", 1-7/16", 1-1/2"

A5621 8pc 3/4" Dr. Impact Socket Set
26, 27, 29, 30, 32, 35, 36, 38mm





Impact Socket Sets (Chrome Molybdenum Steel)



A5623 7pc 3/4" Dr. Deep Impact Socket Set
21, 24, 26, 27, 29, 32, 38mm

A5624 8pc 3/4" Dr. Deep Impact Socket Set
1", 1-1/16", 1-1/8", 1-1/4", 1-5/16"
1-3/8", 1-7/16", 1-1/2"

A5625 8pc 3/4" Dr. Deep Impact Socket Set
26, 27, 29, 30, 32, 35, 36, 38mm



A5630 8pc 1" Dr. Impact Socket Set
7/8", 15/16", 1", 1-1/16", 1-1/8"
1-3/16", 1-1/4", 1-1/2"

A5631 8pc 1" Dr. Impact Socket Set
17 Square, 19 Square, 21 Square
27, 32, 35, 38, 41mm

A5632 9pc 1" Dr. Impact Socket Set
1", 1-1/8", 1-1/4", 1-3/8", 1-1/2"
1-5/8", 1-3/4", 1-7/8", 2"

A5633 9pc 1" Dr. Impact Socket Set
24, 27, 30, 32, 35, 38, 41, 46, 50mm



A5634 8pc 1" Dr. Deep Impact Socket Set
3/4" Square, 13/16" Square, 1-1/16"
1-1/8", 1-3/16", 1-1/4", 1-3/8", 1-1/2"

A5635 8pc 1" Dr. Deep Impact Socket Set
17 Square, 19 Square, 21 Square
27, 32, 35, 38, 41mm

A5636 7pc 1" Dr. Deep Impact Socket Set
13/16" Square, 15/16", 1", 1-1/16"
1-1/8", 1-1/4", 1-1/2"

A5637 7pc 1" Dr. Deep Impact Socket Set
17 Square, 24, 27, 30, 34, 35, 38mm



A5580 7pc 3/8" Dr. Flex Impact Socket Set
3/8", 7/16", 1/2", 9/16", 5/8", 11/16", 3/4"

A5581 7pc 3/8" Dr. Flex Impact Socket Set
10, 11, 12, 13, 14, 16, 17mm

A5590 7pc 1/2" Dr. Flex Impact Socket Set
1/2", 9/16", 5/8", 11/16", 3/4", 13/16", 7/8"

A5591 7pc 1/2" Dr. Flex Impact Socket Set
13, 14, 15, 17, 18, 19, 21mm



Impact Socket Sets (Chrome Vanadium Steel)



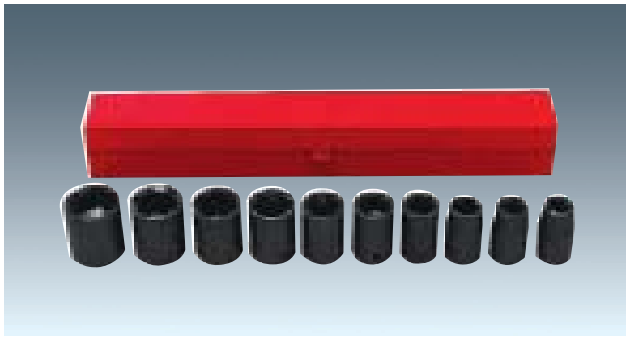
A5650 8pc 3/8" Dr. Impact Socket Set
5/16", 3/8", 7/16", 1/2"
9/16", 5/8", 11/16", 3/4"

A5651 8pc 3/8" Dr. Impact Socket Set
8, 10, 11, 12, 13, 14, 17, 19mm



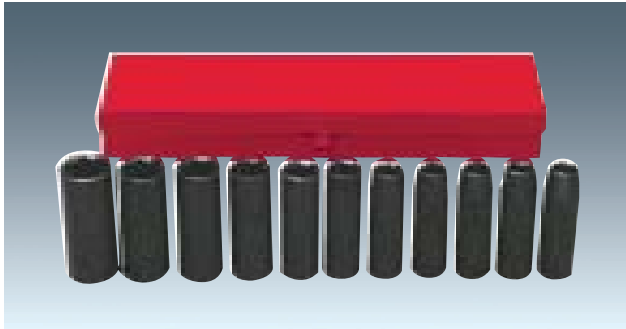
A5652 8pc 3/8" Dr. Deep Impact Socket Set
5/16", 3/8", 7/16", 1/2"
9/16", 5/8", 11/16", 3/4"

A5653 8pc 3/8" Dr. Deep Impact Socket Set
10, 11, 12, 13, 14, 16, 17, 19mm



A5654 10pc 1/2" Dr. Impact Socket Set
7/16", 1/2", 9/16", 5/8", 11/16",
3/4", 13/16", 7/8", 15/16", 1"

A5655 10pc 1/2" Dr. Impact Socket Set
11, 12, 13, 14, 16, 17, 19, 21, 22, 24mm



A5656 11pc 1/2" Dr. Deep Impact Socket Set
3/8", 7/16", 1/2", 9/16", 5/8", 11/16",
3/4", 13/16", 7/8", 15/16", 1"

A5657 11pc 1/2" Dr. Deep Impact Socket Set
10, 11, 12, 13, 14, 16, 17, 19, 21, 22, 24mm



AR5670 38pc 3/8" & 1/2" Dr. Impact Socket

- Chrome Vanadium Steel
- Hardness & torque ratings conform to ANSI standards
- SAE and Metric, standard and deep sizes
- Includes 3/8" and 1/2" impact sockets, extension bars and socket adaptor