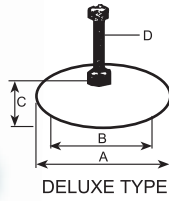




Shock Absorber

DELUXE TYPE



Special Features

Preventing shock & reducing noise. low bed design.
Easy installation. Simple adjustment. High durability.

Application

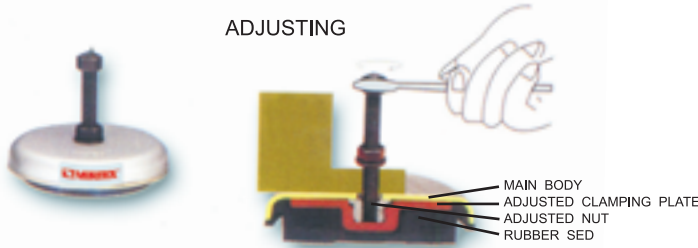
Various general working machines, metal work piece processing machine, production machine, special machine, measuring equipment, testing machine.

Electrical generator, air compressor, etc.

ADJUSTABLE RANGE 6-12 mm

Unit:mm

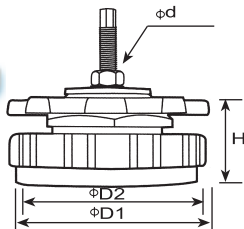
ADJUSTING



ORDER NO.	A	B	C	DxL	LOAD	WEIGHT	CODE NO.
TK-90	90	50	32	12M-100	500kg	0.8kg	7001-000
TK-120	120	90	35	12M-100	1000kg	1.4kg	7001-001
TK-160	160	130	38	16M-110	1500kg	2.8kg	7001-002
TK-200	200	170	45	20M-120	3500kg	4.4kg	7001-003

Features : Easy to operate. shock-absorbent, reduces machine noise includes adjustment, and assures production accuracy.

STANDARD TYPE

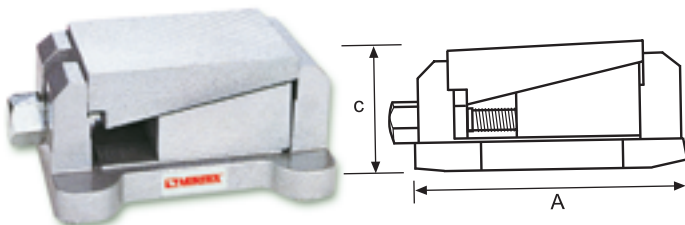


Unit:mm

ORDER NO.	D1	D2	H	∅dxL	LOAD KGS	Adjustment HEIGHT	N.W. KGS	CODE NO.
SB-4	100	90	60	12X50	500	25	2	7001-031
SB-6	150	135	95	16X110	1000	40	5	7001-032
SB-8	200	180	100	20X120	2500	40	8	7001-033
SB-10	250	230	125	24X180	4000	40	12	7001-034

SUITABLE FOR : machine tools, molding machine, printing machine, CNC lathe, grinding machines, drilling machines, milling machines.

HEAVY DUTY TYPE



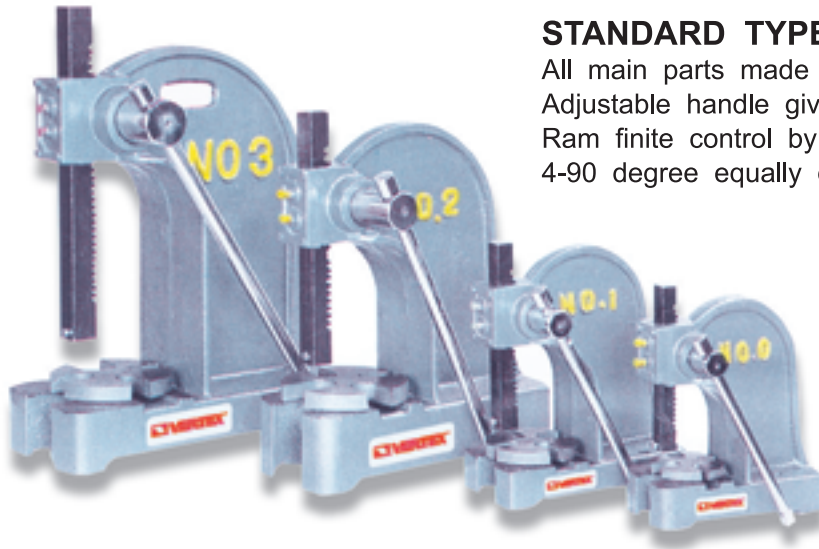
Unit:mm

ORDER NO.	A	B	C	LOAD KGS	Adjustment HEIGHT	N.W. KGS	CODE NO.
SC-1	130	96	66	700	4MM	4	7001-060
SC-2	174	143	80	1500	5MM	8.8	7001-061
SC-3	217	165	101	2500	6MM	16	7001-062

SUITABLE FOR : CNC lathe, milling machines, cutting machines, grinding machines.



Arbor Press



STANDARD TYPE

All main parts made of ductile cast iron.
Adjustable handle gives convenient handle positioning.
Ram finite control by smooth gears.
4-90 degree equally divided slotted round table.

ORDER NO.	VAR-0	VAR-1	VAR-2	VAR-3	VAR-5
OVERALL HEIGHT	254mm(10")	304mm(12")	432mm(17")	546mm(21")	820mm(34")
STROKE	114mm	133mm	215mm	317mm	460mm
BASE	102x240mm	127x273mm	162x410mm	216x457mm	250x660mm
CENTER TO KNEE	84	98	144	137	140
ARBOR PUNCH <input type="checkbox"/>	19x19x190	25x25x2	32x32x2	38x38x456	45x45x67
WEIGHT (kgs)	8.5	12	27.5	50	140
CODE NO.	7002-100	7002-101	7002-102	7002-103	7002-104



RATCHET LEVERS TYPE

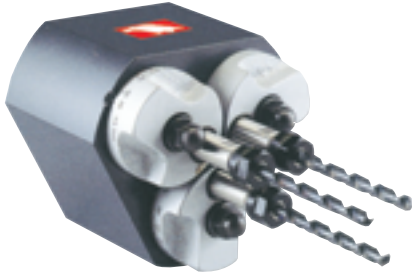
This arbor press with all standard's feature. But operated with a ratchet device that will permit you to use the lever in the most convenient position, the lever has a counterweight for quick return after which the down stroke handwheel will advance the ram to the work quickly.

Ratchet Type Arbor Press available-No.2/3/5 only.
The size is same as VAR-2, 3, 5

ORDER NO.	VARR-3	VARR-5
G.W. KGS	65	162
CODE NO.	7002-131	7002-132



Multi-Spindle Drill Head



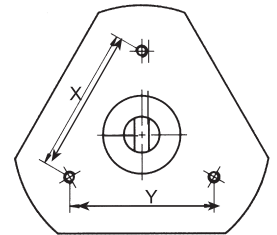
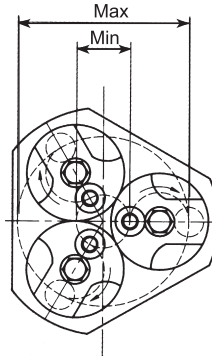
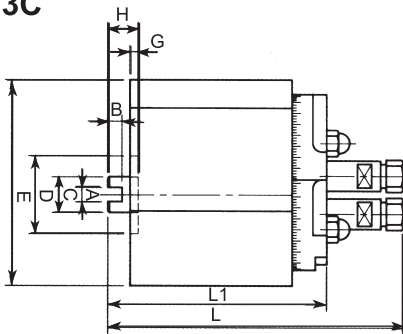
- The helical driving gears give high torque transmission effect.
- The Drill head accommodates high running speed up to 5500 RPM.
- Reversible spindle running permits it ideal for both drilling and tapping operations.



V33C
3 SPINDLE & CIRCULAR TYPE

V40C
4 SPINDLE & CIRCULAR TYPE

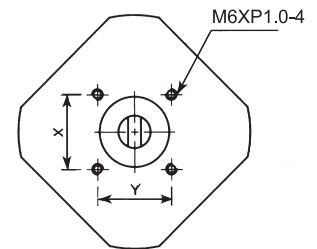
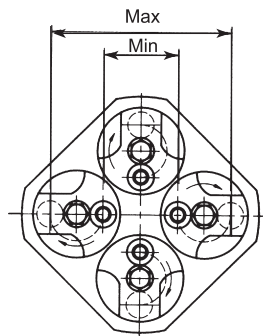
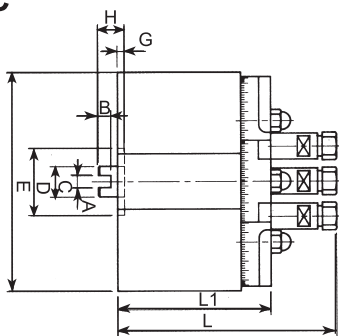
V33C



ORDER NO.	A	B	C	D	E	G	H	L	L1	X	Y	ADJ. SPACING		MAX. CAPACITY COLLET RANGE	KGS	CODE NO.
												MIN.	MAX.			
V33C-T7					130			149	109			∅28	∅100	ER-11, ∅7~∅1	5.5	7002-200
V33C-T10	10	10	30	55	155	3	15	152	112	86.6	86.6	∅32	∅116	ER-16, ∅10~∅1	10.5	7002-201
V33C-T12					172			162	122			∅38	∅138	ER-20, ∅13~∅1	13	7002-202
V40C-T7					145			152	112			∅42	∅114	ER-11, ∅7~∅1	6.5	7002-203
V40C-T10	10	10	30	55	172	3	15	152	112	70.7	70.7	∅48	∅132	ER-16, ∅10~∅1	12.5	7002-204
V40C-T12					192			162	122			∅58	∅158	ER-20, ∅13~∅1	14	7002-205

THE ER-COLLET IS OPTIONAL

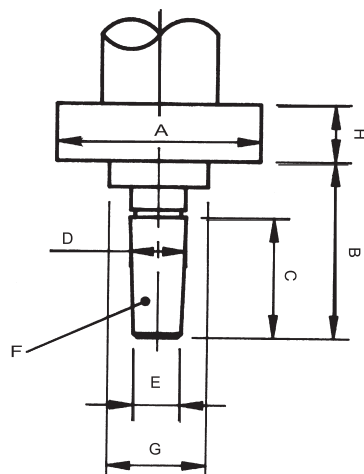
V40C



When ordering please provide the dimensions in mm unit on the spindle. This size is for mounting collar using.

F Chuck taper					
No	JT1	JT2	JT6	JT3	JT4
C	21	22.4	26.3	31.3	45
E	8.6	14	16	19.3	26.4

F Chuck taper					
No	B10	B12	B16	B18	B20
C	18	22	29	27	45.5
E	9.4	11.1	14.5	16.2	19.8





Portable Magnetic Drilling & Tapping Machine



OPTIONAL

TC-3S



TC-6R (S)



TC-10R (S)

OPTIONAL ACCESSORIES : ELECTRIC DRILL
TC-10D, TC-25D, TC-32D



TC-12W



TC-12S (R)

MAGNETIC BASE : R IS ROUND
S IS SQUARE , WHEN YOU ORDER, YOU CAN CHOOSE R OR S

SPECIFICATIONS

ORDER NO.	Dia of drilling (mm)	Power source		Stroke (mm)	Tuning angle	Shaft forward & backward(mm)	Magnet (mm)	Magnet Holding Power	Height (mm)	N.W. (kg)	CODE NO.
		Voltage(V)	Power(W)								
TC-3S	2-10 ∅	110.220	78	90			100 x 130	450	280	8	7002-301
TC-6S	2-18 ∅	110.220	78	200	330°	20	180 x 105	800	400	18.5	7002-302
TC-6R	2-18 ∅	110.220	78	200	330°	20	150 ∅	800	400	18.5	7002-303
TC-10R	2-25 ∅	110.220	78	250	330°	20	160 ∅	1000	530	26.5	7002-304
TC-10S	2-25 ∅	110.220	78	250	330°	20	105 x 220	1000	530	26.5	7002-305
TC-12W	2-32 ∅	110.220	78	280	50°	20	135 x 260	1500	530	37	7002-306
TC-12S	2-32 ∅	110.220	78	280	330°	20	135 x 260	1500	530	37	7002-307
TC-25D	25MM	110.220									7002-308
TC-32D	32MM	110.220									7002-309
TC-10D	10m/m	110.220									7002-310



Wet & Dry Vacuum Cleaner

INDUSTRIAL BUSINESS USE



ORDER NO.	CODE NO.
CE-2020	7002-402
CE-2032	7002-403

AUTO CORD REEL FUNCTION

- VOLTAGE : 110V-240V
- POWER CONSUMPTION : 1000W / 700W
- SUCTION EFFICIENCY : 180W
- MOTOR : 1 MOTOR 2 STAGE
- CAPACITY : 20 / 32L(Stainless steel tank)
- STANDARD ACCESSORIES : \varnothing 32(B)
- G.W : 8 / 9KGS
- PACKING SIZE : 330 x 340 x 670mm



ORDER NO.	CODE NO.
SPCE-1040	7002-405
SPCE-1060	7002-406

- VOLTAGE : 110V-240V
- POWER CONSUMPTION : 2000W
- SUCTION EFFICIENCY : 300W
- MOTOR : 2 MOTOR 2 STAGE
- CAPACITY : 40L / 60L
- STANDARD ACCESSORIES : \varnothing 38(A)
- G.W : 25 / 27KGS
- PACKING SIZE : 405 x 405 x 780 / 890mm

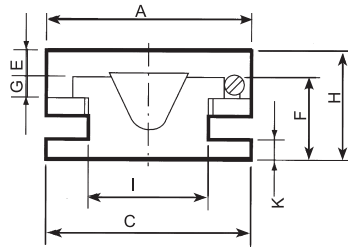
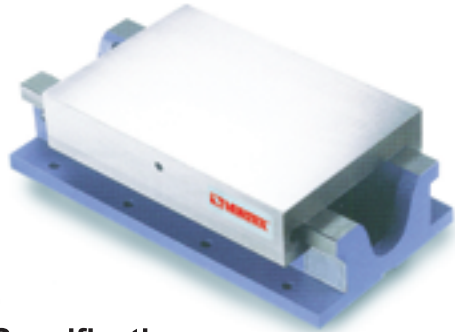


ORDER NO.	CODE NO.
AMT-10.0	7002-404

- VOLTAGE : 110V-240V
- POWER CONSUMPTION : 1000W
- SUCTION EFFICIENCY : 210W
- MOTOR : 1 MOTOR 2 STAGE
- CAPACITY : 40L
- STANDARD ACCESSORIES : \varnothing 38(A)
- G.W : 21KGS
- PACKING SIZE : 405 x 405 x 730mm



Economic H Type Slide Table



- Material : FC-30
- Precision : $\pm 0.01 / 100\text{mm}$
- FEATURE : The sliding surfaces are treated by heat-treatment & precision ground The slide used V type.

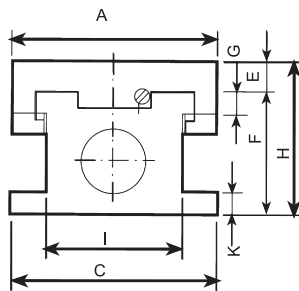
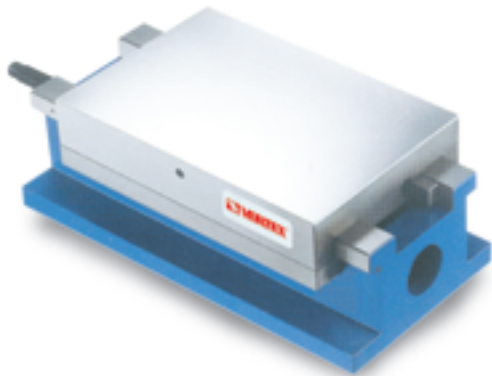
•Specifications

Unit: mm

ORDER NO.	A x B Table surface	C x D Base area	H	E	F	G	K	I	CYLINDER OF THROUGH HOLE	WEIGHT kgs	CODE NO.
STB-1630	160x200	160x300	90	20	60	17	20	90	U TYPE	19	7002-501
STB-1640	160x200	160x400	90	20	60	20	20	90	U TYPE	22	7002-502
STB-2040	200x300	200x400	120	30	90	20	20	120	U TYPE	38	7002-503
STB-2060	200x300	200x600	120	30	90	20	20	120	U TYPE	48	7002-504
STB-2080	200x300	200x800	120	30	90	20	20	120	U TYPE	60	7002-505
STB-20100	200x300	200x1000	120	30	90	20	20	120	U TYPE	70	7002-506



Power H Type Slide Table



- Material : FC-30
- Precision : $\pm 0.01 / 100\text{mm}$
- FEATURE : The sliding surfaces are treated by heat-treatment & precision ground

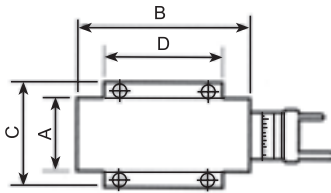
•Specifications

Unit: mm

ORDER NO.	A x B Table surface	C x D Base area	H	E	F	G	K	I	CYLINDER OF THROUGH HOLE	WEIGHT kgs	CODE NO.
STC-2040	200x300	200x400	150	30	120	20	25	132	65 ϕ	50	7002-520
STC-2050	200x300	200x500	150	30	120	20	25	132	65 ϕ	58	7002-521
STC-2060	200x300	200x600	150	30	120	20	25	132	65 ϕ	65	7002-522
STC-3050	300x350	300x500	188	39	145	25	28	213	75 ϕ	98	7002-524
STC-3070	300x350	300x700	188	39	145	25	28	213	75 ϕ	120	7002-525
STC-3080	300x350	300x800	188	39	145	25	28	213	75 ϕ	135	7002-526

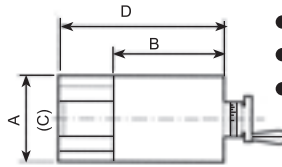


One Way Acme Thread Slide Table



ST-75 ST-100 ST-125

- Material : FC-30
- Precision : $\pm 0.01 / 100\text{mm}$



STA-160 STA-165 STA-200
STA-205 STA-300 STA-305

- Material : FC-30
- Precision : $\pm 0.01 / 100\text{mm}$
- FEATURE : The sliding surfaces are treated by heat-treatment & precision ground

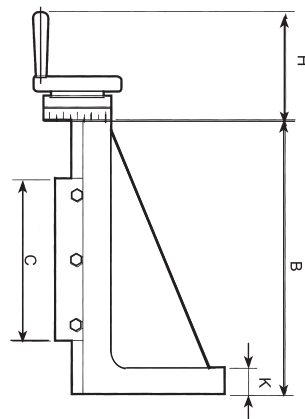
•Specifications

Unit: mm

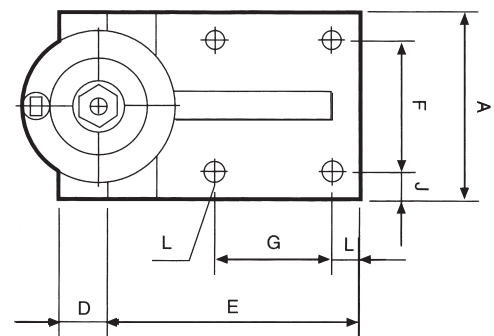
ORDER NO.	A x B Table surface	C x D Base area	Stroke	Total height	Dial graduation	WEIGHT kgs	CODE NO.
ST-75	75x180	105x155	75	60	2.5x0.02	6.5	7002-540
ST-100	100x235	140x150	100	70	2.5x0.02	9.5	7002-541
ST-125	125x300	165x255	125	80	4.0x0.02	18.5	7002-542
STA-160	160x200	160x300	100	90	4.0x0.02	20.0	7002-543
STA-165	160x200	160x400	200	90	4.0x0.02	23.0	7002-544
STA-200	200x300	200x400	100	120	4.0x0.02	38.0	7002-545
STA-205	200x300	200x600	300	120	4.0x0.02	50.0	7002-546
STA-300	300x350	300x500	150	188	4.0x0.02	98.0	7002-547



Vertical Dovetail Slide Table



- Material : FC-30
- Precision : $\pm 0.01 / 100\text{mm}$
- FEATURE : The sliding surfaces are treated by heat-treatment & precision ground
Dial graduation 4.0x0.02mm



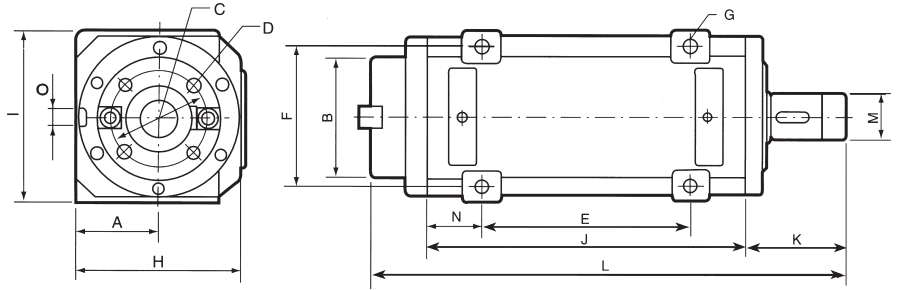
•Specifications

Unit: mm

ORDER NO.	A	B	C	D	E	F	G	H	I	J	K	L	WEIGHT kgs	CODE NO.
SE-100	100	255	150	25	130	70	60	120	15	15	26	∅10x4	15	7002-560
SE-150	150	385	200	40	185	110	90	120	20	20	35	∅13x4	35	7002-561
SE-200	200	510	250	60	240	160	140	135	20	20	40	∅17x4	67	7002-562
SE-250	250	600	300	60	280	200	160	140	25	25	40	∅17x4	115	7002-563



Precision Boring / Milling Spindle Head



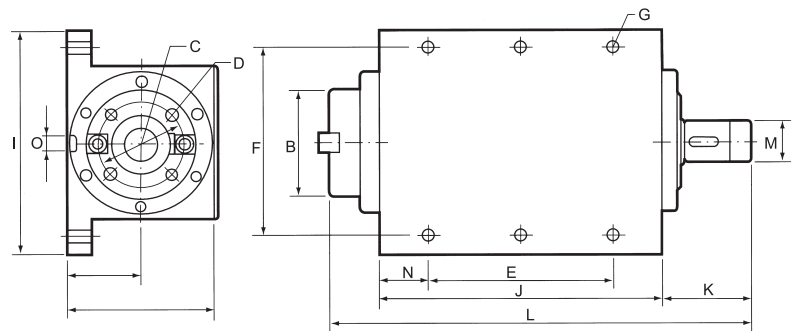
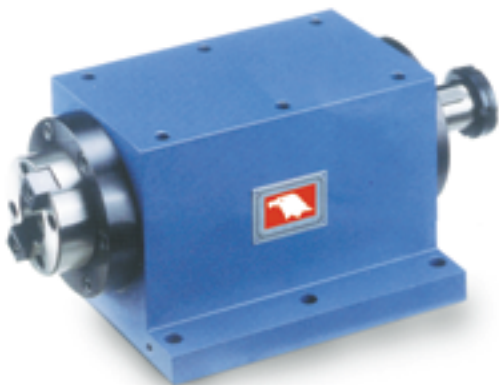
• Specifications

Unit: mm

ORDER NO.	TAPER	MAX.RPM	A	B	C	D	E	F	G	H	I	J	K	L	M	N	O	WEIGHT kgs	BEARING O.D.	CODE NO.
SH03	MT3	7000	45	∅ 42			80	70	∅ 9-4	90	90	160	75	270	∅ 25	35	16x5	8kg	∅ 62 ∅ 55	7002-600
SH04	MT4	2500	70	∅ 88.882			190	90	∅ 15-4	145	150	280	94	427	∅ 35	45	16x5	36kg	∅ 90	7002-601
SH30	NT30	3000	55	∅ 69.832	∅ 54	M10xP1.5-4	120	90	∅ 11-4	114	114	200	72	317	∅ 30	40	16x5	18kg	∅ 75	7002-603
SH40	NT40	2500	70	∅ 88.882	∅ 66.7	M12xP1.75-4	190	150	∅ 15-4	170	184	280	106	427	∅ 35	45	16x5	39kg	∅ 90	7002-605
SH50	NT50	2000	85	∅ 128.57	∅ 101.6	M16xP2.0-4	220	150	∅ 15-4	170	184	340	106	500	∅ 50	60		75kg	∅ 115	7002-607



Precision Boring / Milling Spindle Head



• Specifications

Unit: mm

ORDER NO.	TAPER	MAX.RPM	A	B	C	D	E	F	G	H	I	J	K	L	M	N	O	WEIGHT kgs	BEARIN O.D.	CODE NO.
SH30A	NT30	3000	77	∅ 69.832	∅ 54	M10xP1.5-4	160	140	∅ 11-6	133	176	200	72	317	∅ 30	10	16x5	22kg	∅ 75	7002-620
SH30B	NT30	9000	77	∅ 69.832	∅ 54	M10xP1.5-4	160	140	∅ 11-6	133	176	200	72	317	∅ 30	10	16x5	22kg	∅ 75	7002-621
SH40A	NT40	2500	77	∅ 88.882	∅ 66.7	M12xP1.75-4	180	170	∅ 11-6	147	200	220	94	367	∅ 35	20	16x5	45kg	∅ 90	7002-622
SH40B	NT40	8000	77	∅ 88.882	∅ 66.7	M12xP1.75-4	180	170	∅ 11-6	147	200	220	94	367	∅ 35	20	16x5	45kg	∅ 90	7002-623



Drilling Head Units

DH-TYPE



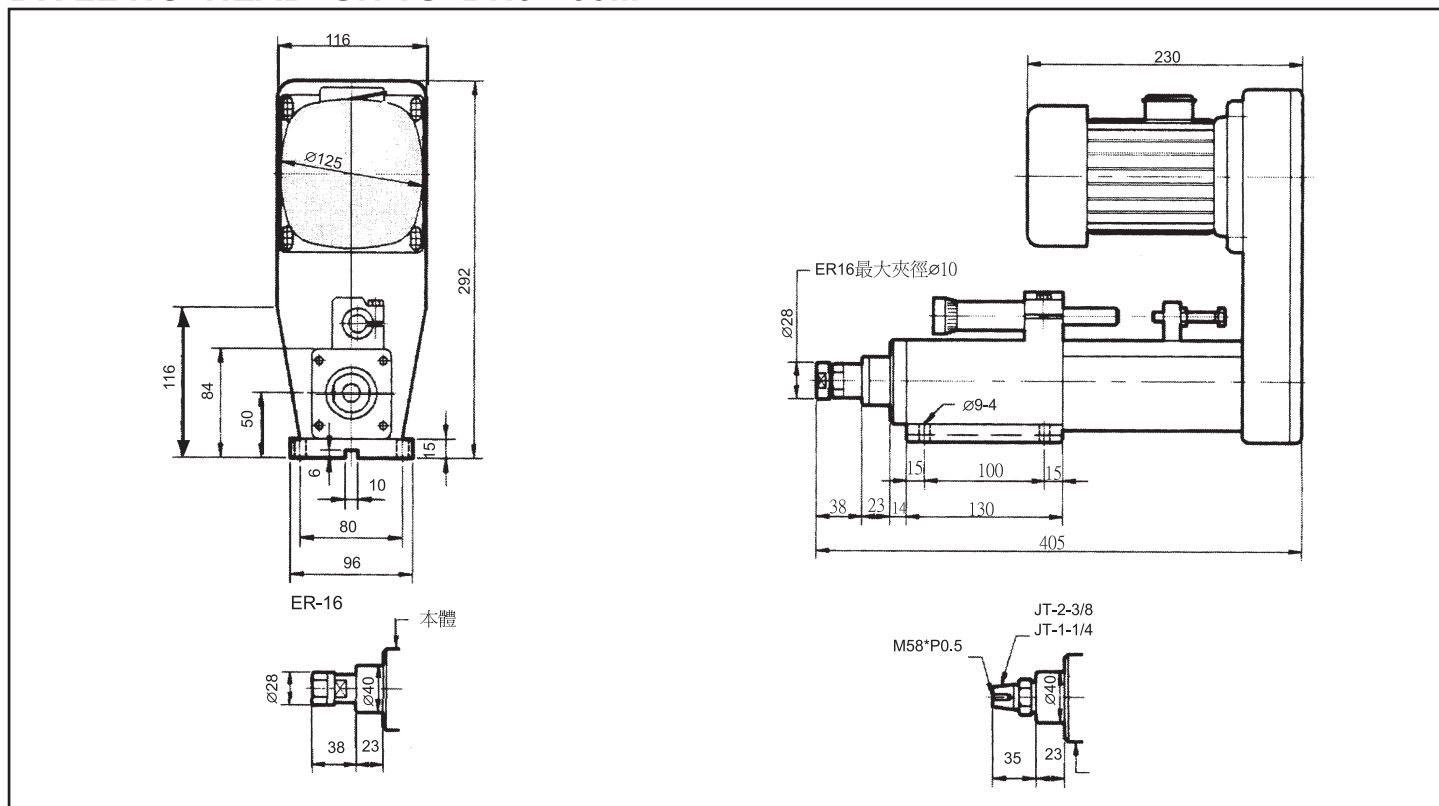
WHEN YOU ORDER, YOU MUST CONFIRM

1. THE SPINDLE SIZE (JT-6, ER- OR MT-3)
2. 3PH MOTOR AND POWER, VOLTAGE & PHASE
3. THE MATERIAL OF WORKPIECE
4. THE MATERIAL AND DIA. OF CUTTING TOOL
5. THE TRAVEL POWER ON MACHINE IS HYDRAULIC OR AIR.
6. FIXED PRM.

SPECIFICATION

ORDER NO.	TRAVEL	CAPACITY	MAX. RPM	POWER	CENTER HEIGHT	MOTOR	HYDRAULIC SPACE	WEIGHT kgs	CODE NO.
DH3 - 60M	60 m/m	6 ϕ	10000	HYDRAULIC OR AIR	50 \pm 0.02	1/2 HP	12.6 cm ²	26 kg	7002-700
DH5 - 85M	85 m/m	13 ϕ	5000	HYDRAULIC OR AIR	70 \pm 0.02	1 HP	21.6 cm ²	50 kg	7002-701
DH6 - 130M	130 m/m	16 ϕ	3200	HYDRAULIC	70 \pm 0.02	1 HP	43.2 cm ²	45 kg	7002-702
DH8 - 150M	150 m/m	25 ϕ	1500	HYDRAULIC	90 \pm 0.02	2 HP	71.2 cm ²	70 kg	7002-703
DH9 - 150M	150 m/m	35 ϕ	1200	HYDRAULIC	90 \pm 0.02	2 HP	71.2 cm ²	75 kg	7002-704

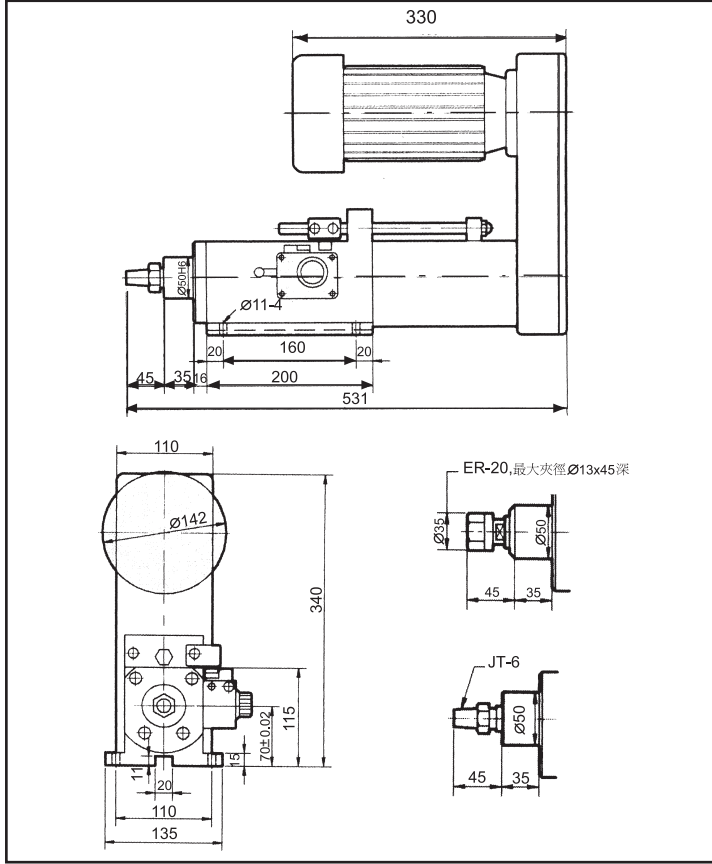
DRILLING HEAD UNITS DH3 - 60M



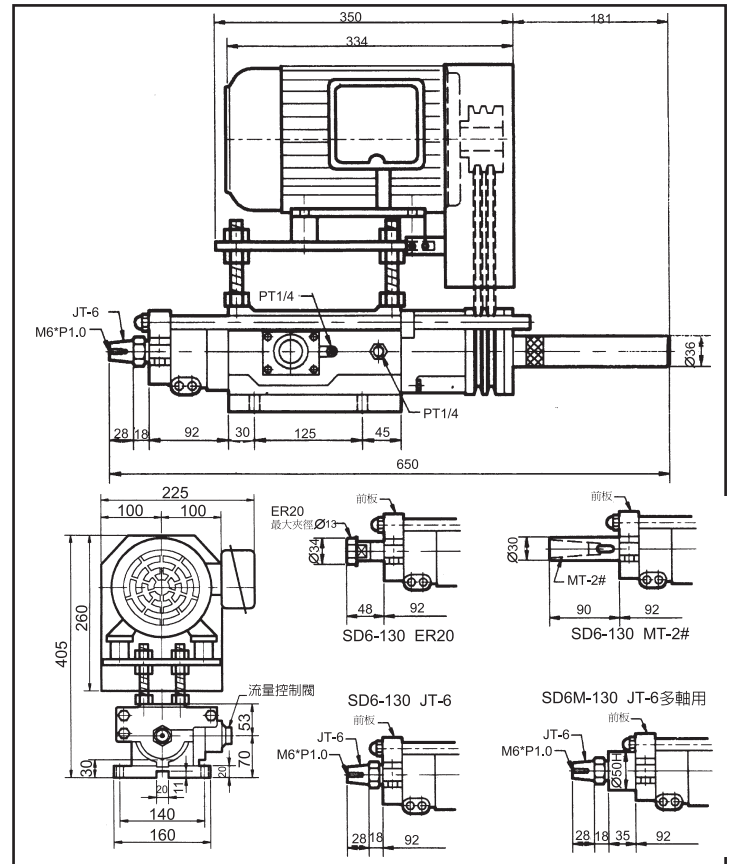


Drilling Head Units

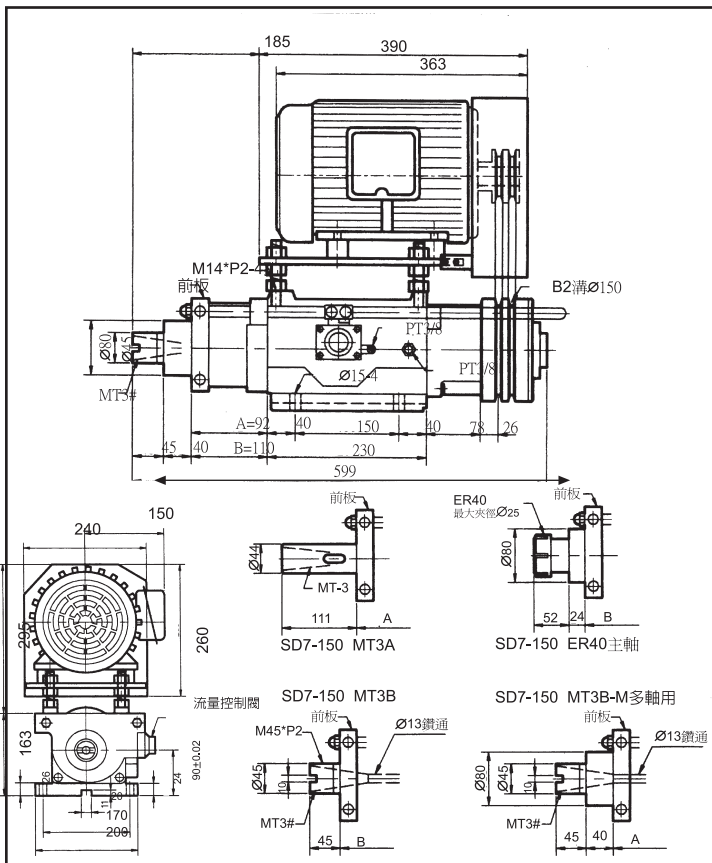
DRILLING HEAD UNITS DH5 - 85M



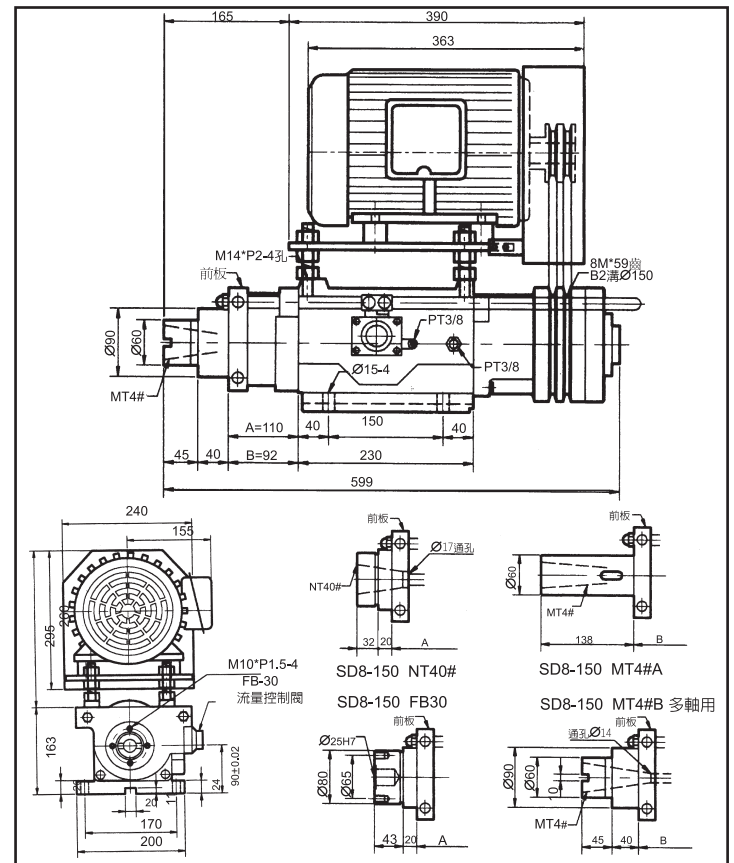
DRILLING HEAD UNITS DH6 - 130M



DRILLING HEAD UNITS DH8 - 150M



DRILLING HEAD UNITS DH9 - 150M





Tapping Head Units



WHEN YOU ORDER, PLEASE CONFIRM

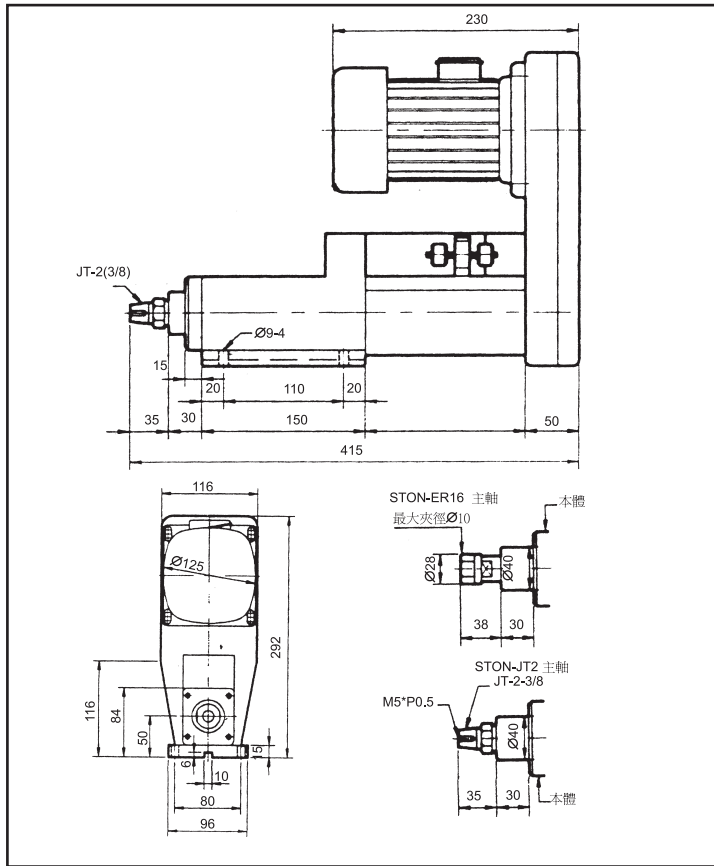
1. ORDER NO.
2. Spindle Size (JT-2, JT-6, ER-16, ER-20, MT-2, MT-3, MT-4, NT-40, TR-20)
3. Tap Size And Pitch.
4. Voltage Number of Phase, Frequency.
5. Fixed R. P. M.
6. If Spindle Revolve Under 400 RPM
Use Reducer Gear Motor (Option).

ORDER NO.	SPINDLE STROKE	CAPACITY (S45C)	MIN. PITCH	SPINDLE CENTER	MOTOR	WEIGHT kgs.	CODE NO.
TH-50M	50 m/m	6 \varnothing	0.4 m/m	50m/m \pm 0.02	1/2 HP	18kg	7002-801
TH-65M	65 m/m	14 \varnothing	0.6 m/m	70m/m \pm 0.02	1 HP	30kg	7002-802
TH-85M	85 m/m	35 \varnothing	0.6 m/m	90m/m \pm 0.02	2 HP	70kg	7002-803
TH-90M	90 m/m	45 \varnothing	0.6 m/m	90m/m \pm 0.02	2 HP	80kg	7002-804

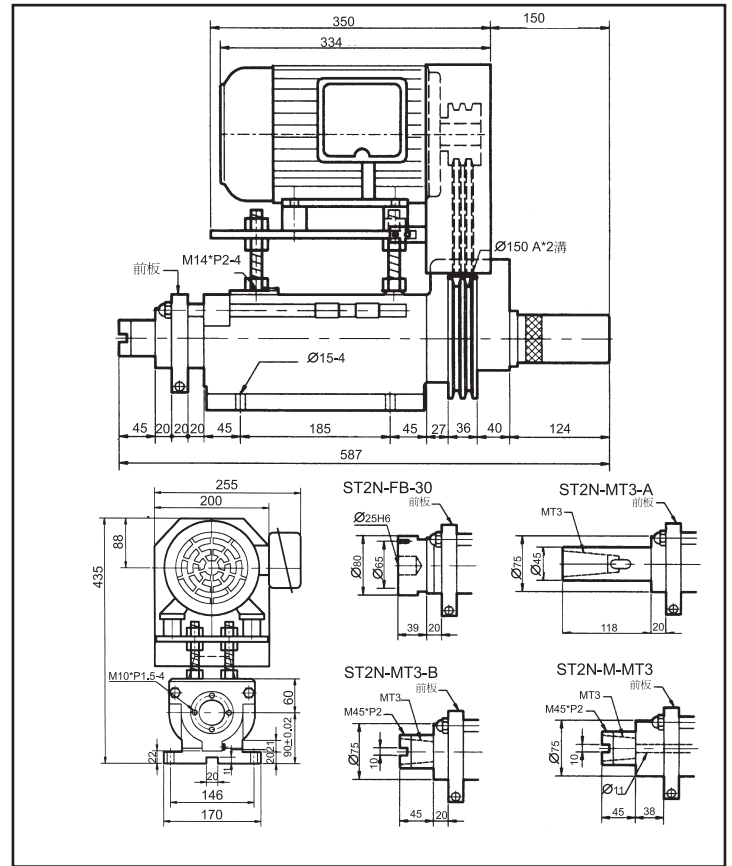


Tappings Head Units

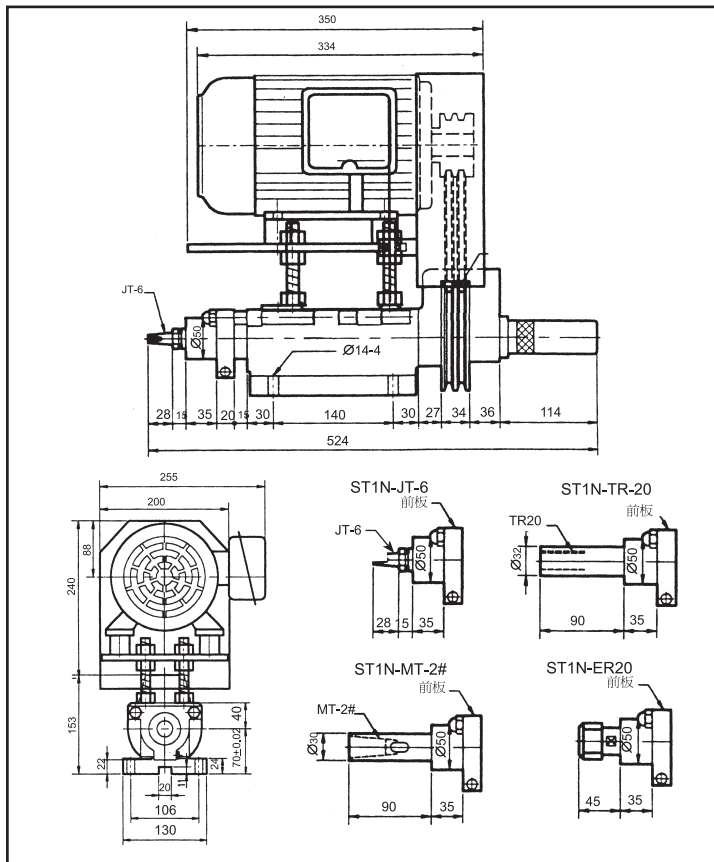
TAPPINGS HEAD UNITS TH-50M



TAPPINGS HEAD UNITS TH-85M



TAPPINGS HEAD UNITS TH-65M



TAPPINGS HEAD UNITS TH-90M

