

FM 610



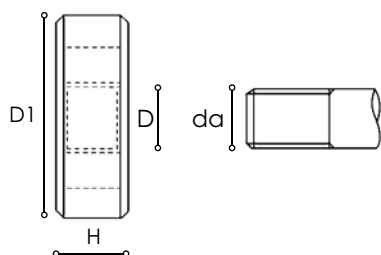
60°



FMS 630



60°



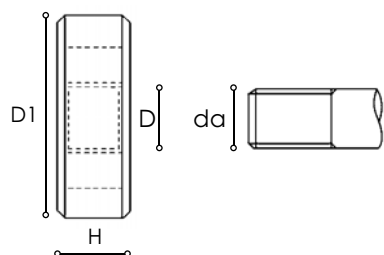
D	da	D1	H	CODE	HSS 5610..... €	HSS 5630..... €
M 1,6 x 0,35	1,54	16	5	....00160	22,25	
M 2 x 0,4	1,94	16	5	....00002	22,25	
M 2,5 x 0,45	2,43	16	5	....00025	22,25	
M 3 x 0,5	2,92	20	5	....00003	17,25	24,63
M 3,5 x 0,6	3,41	20	5	....00035	17,49	24,63
M 4 x 0,7	3,9	20	5	....00004	17,13	24,63
M 4,5 x 0,75	4,4	20	7	....00045	17,96	25,93
M 5 x 0,8	4,9	20	7	....00005	18,44	27,01
M 6 x 1	5,88	20	7	....00006	18,44	27,01
M 7 x 1	6,88	25	9	....00007	20,58	31,53
M 8 x 1,25	7,86	25	9	....00008	20,22	29,38
M 9 x 1,25	8,86	25	9	....00009	20,58	29,38
M 10 x 1,5	9,85	30	11	....00010	20,94	30,57
M 11 x 1,5	10,85	30	11	....00011	26,39	40,92
M 12 x 1,75	11,83	38	14	....00012	28,19	40,92
M 14 x 2	13,82	38	14	....00014	29,50	43,07
M 16 x 2	15,82	45	18	....00016	39,62	55,80
M 18 x 2,5	17,79	45	18	....00018	40,92	56,88
M 20 x 2,5	19,79	45	18	....00020	47,85	58,93
M 22 x 2,5	21,79	55	22	....00022	54,94	78,09
M 24 x 3	23,76	55	22	....00024	62,60	84,67
M 27 x 3	26,76	65	25	....00027	78,73	151,32
M 30 x 3,5	29,73	65	25	....00030	81,82	184,51
M 33 x 3,5	32,73	65	25	....00033	84,68	
M 36 x 4	35,7	65	25	....00036	90,31	
M 39 x 4	38,7	75	30	....00039	128,13	
M 42 x 4,5	41,68	75	30	....00042	148,23	
M 45 x 4,5	44,68	90	36	....00045	334,89	
M 48 x 5	47,65	90	36	....00048	334,89	
M 52 x 5	51,65	90	36	....00052	336,20	

**FILIERE  
SCHÄLANSCHNITT**
**CON**
**IMBOCCO  
FILIERES**
**AVEC**
**CORRETTO  
ENTREE**
**DIES  
"GUN"**
**WITH**
**SPIRAL  
TERRAJAS**
**POINT  
CON**
**SCHNEIDEISEN  
ENTRADA**
**MIT  
CORREGIDA**
**FMF 600**


60°


**FMFS 640**


60°



D	da	D1	H	CODE	HSS 5600..... €	HSS 5640..... €
MF 2 x 0,25	1,95	16	5	....00002	29,62	
MF 2,5 x 0,35	2,44	16	5	....00025	29,62	
MF 3 x 0,35	2,94	20	5	....00003	21,18	33,07
MF 3,5 x 0,35	3,44	20	5	....00035	21,18	33,07
MF 4 x 0,5	3,93	20	5	....00004	21,18	31,88
MF 4,5 x 0,5	4,43	20	5	....00045		31,88
MF 5 x 0,5	4,90	20	5	....00005	21,18	31,88
MF 5,5 x 0,5	5,43	20	5	....00055	21,18	31,88
MF 6 x 0,75	5,90	20	7	....00006	21,18	28,79
MF 7 x 0,75	6,90	25	9	....00007	22,72	35,09
MF 8 x 0,75	7,90	25	9	....07508	22,72	31,05
MF 8 x 1	7,88	25	9	....10008	22,72	31,05
MF 9 x 0,75	8,90	25	9	....07509	23,60	
MF 9 x 1	8,88	25	9	....10009	23,60	38,43
MF 10 x 0,75	9,90	30	11	....75010	29,62	38,43
MF 10 x 1	9,88	30	11	....10010	29,38	43,42
MF 10 x 1,25	9,86	30	11	....12510	29,38	43,42
MF 11 x 0,75	10,90	30	11	....07511	36,28	
MF 11 x 1	10,88	30	11	....10011	36,28	53,77
MF 11 x 1,25	10,86	30	11	....12511		53,77
MF 12 x 1	11,88	38	10	....10012	36,28	50,56
MF 12 x 1,25	11,86	38	10	....12512	35,81	50,56
MF 12 x 1,5	11,85	38	10	....15012	35,81	50,56
MF 14 x 1	13,88	38	10	....10014	36,28	51,65
MF 14 x 1,25	13,86	38	10	....12514	36,28	51,65
MF 14 x 1,5	13,85	38	10	....15014	35,81	51,65
MF 15 x 1	14,88	38	10	....10015	49,37	56,03
MF 15 x 1,5	14,85	38	10	....15015	49,37	56,03
MF 16 x 1	15,88	45	14	....10016	51,51	73,17
MF 16 x 1,25	15,86	45	14	....12516	50,44	73,17
MF 16 x 1,5	15,85	45	14	....15016	51,04	
MF 18 x 1	17,88	45	14	....10018	51,51	73,17
MF 18 x 1,5	17,85	45	14	....15018	51,04	73,17
MF 18 x 2	17,80	45	14	....20018	51,04	
MF 20 x 1	19,88	45	14	....10020	53,18	76,45
MF 20 x 1,5	19,85	45	14	....15020	53,18	76,45
MF 20 x 2	19,80	45	14	....20020	53,18	
MF 22 x 1	21,88	55	16	....10022	79,11	110,88
MF 22 x 1,5	21,85	55	16	....15022	78,40	110,88
MF 22 x 2	21,80	55	16	....20022	78,40	

FMF 600



60°



FMFS 640

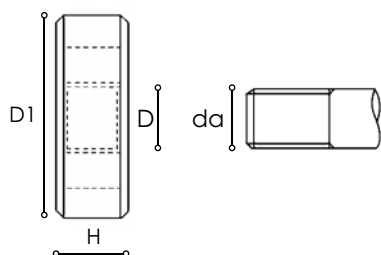


60°



FMF600

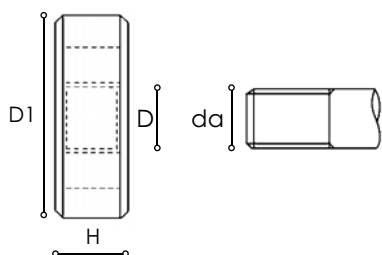
FMFS640



D	da	D1	H	CODE	HSS 5600..... €	HSS 5640..... €
MF 24 x 1	23,88	55	16	....10024	83,16	118,50
MF 24 x 1,5	23,85	55	16	....15024	83,16	118,50
MF 24 x 2	23,80	55	16	....20024	83,16	
MF 25 x 1,5	24,85	55	16	....15025	108,50	
MF 25 x 2	24,80	55	16	....20025	108,50	
MF 26 x 1,5	25,85	55	16	....15026	108,50	
MF 26 x 2	25,80	55	16	....20026	108,50	
MF 27 x 1	26,88	65	18	....10027		164,77
MF 27 x 1,5	26,85	65	18	....15027	110,76	164,77
MF 27 x 2	26,80	65	18	....20027	110,76	
MF 28 x 1,5	27,85	65	18	....15028	110,76	164,77
MF 28 x 2	27,80	65	18	....20028	110,76	164,77
MF 30 x 1	29,85	65	18	....10030	112,92	174,28
MF 30 x 1,5	29,85	65	18	....15030	112,92	174,28
MF 30 x 2	29,80	65	18	....20030	112,92	
MF 32 x 1,5	31,85	65	18	....15032	113,16	
MF 32 x 2	31,82	65	18	....20032	113,16	
MF 33 x 1,5	32,85	65	18	....15033	117,15	
MF 33 x 2	32,82	65	18	....20033	117,15	
MF 36 x 1,5	35,85	65	18	....15036	122,24	
MF 36 x 2	35,82	65	18	....20036	122,24	
MF 36 x 3	35,76	65	25	....30036	122,24	
MF 39 x 1,5	38,85	75	20	....15039	164,72	
MF 39 x 2	38,82	75	20	....20039	164,72	
MF 39 x 3	38,76	75	30	....30039	164,72	
MF 40 x 1,5	39,85	75	20	....15040	164,72	
MF 40 x 2	39,82	75	20	....20040	164,72	
MF 40 x 3	39,76	75	30	....30040	164,72	
MF 42 x 1,5	41,85	75	20	....15042	167,98	
MF 42 x 2	41,82	75	20	....20042	167,98	
MF 42 x 3	41,76	75	30	....30042	167,98	
MF 45 x 1,5	44,85	90	22	....15045	266,86	
MF 45 x 2	44,82	90	22	....20045	266,86	
MF 45 x 3	44,76	90	36	....30045	266,86	
MF 48 x 1,5	47,85	90	22	....15048	266,86	
MF 48 x 2	47,82	90	22	....20048	266,86	
MF 48 x 3	47,76	90	36	....30048	266,86	
MF 50 x 1,5	49,85	90	22	....15050	277,27	
MF 50 x 2	49,82	90	22	....20050	277,27	
MF 50 x 3	49,76	90	36	....30050	277,27	
MF 52 x 1,5	51,85	90	22	....15052	326,56	
MF 52 x 2	51,82	90	22	....20052	326,56	
MF 52 x 3	51,76	90	36	....30052	326,56	

**FUNC 645**


60°


**FUNC645**


D	da	D1	H	CODE	HSS 5645..... €
UNC 4 - 40	2,76	20	5	....00440	35,38
UNC 5 - 40	3,09	20	5	....00540	35,38
UNC 6 - 32	3,41	20	7	....00632	35,38
UNC 8 - 32	4,07	20	7	....00832	35,38
UNC 10 - 24	4,71	20	7	....01024	35,38
UNC 12 - 24	5,37	20	7	....01224	38,30
UNC 1/4 - 20	6,22	20	7	....01420	34,56
UNC 5/16 - 18	7,80	25	9	....51618	38,08
UNC 3/8 - 16	9,37	30	11	....03816	42,87
UNC 7/16 - 14	10,95	30	11	....71614	43,03
UNC 1/2 - 13	12,52	38	14	....01213	55,81
UNC 9/16 - 12	14,10	38	14	....91612	56,02
UNC 5/8 - 11	15,68	45	18	....05811	77,15
UNC 3/4 - 10	18,84	45	18	....03410	77,39
UNC 7/8 - 9	22,00	55	22	....07809	106,43
UNC 1" - 8	25,16	55	22	....01008	112,19

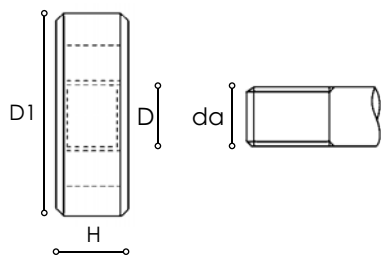
FUNF 650



60°



FUNF650



D	da	D1	H	CODE	HSS 5650..... €
UNF 4 - 48	2,77	20	5	....00448	32,67
UNF 5 - 44	3,10	20	5	....00544	30,66
UNF 6 - 40	3,42	20	5	....00640	30,66
UNF 8 - 36	4,08	20	7	....00836	30,66
UNF 10 - 32	4,73	20	7	....01032	30,66
UNF 12 - 28	5,38	20	7	....01228	33,20
UNF 1/4 - 28	6,24	20	7	....01428	34,56
UNF 5/16 - 24	7,82	25	9	....51624	37,27
UNF 3/8 - 24	9,41	30	11	....03824	42,87
UNF 7/16 - 20	10,98	30	11	....71620	37,96
UNF 1/2 - 20	12,56	38	10	....01220	56,02
UNF 9/16 - 18	14,14	38	10	....91618	56,26
UNF 5/8 - 18	15,73	45	14	....05818	77,15
UNF 3/4 - 16	18,89	45	14	....03416	77,39
UNF 7/8 - 14	22,05	55	16	....07814	106,43
UNF 1" - 12	25,21	55	16	....01012	112,19