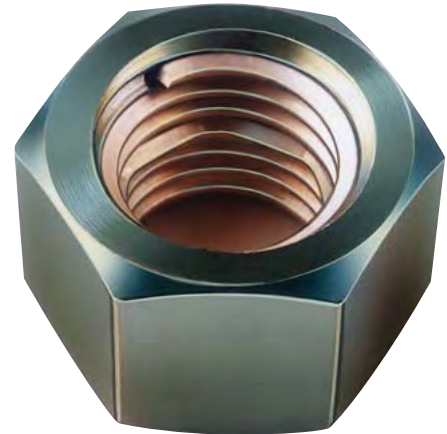


# AMELOCK self-locking nut

AMELOCK is a safety nut whose locking part is obtained by deformation of an AMECOIL AF thread insert.

## AMELOCK has numerous advantages:

Eliminates cotter pins, lock nuts and washers -  
 Resists vibrations - Keeps its locking action after several assembly/disassembly operations - Is symmetrical and can be fitted in both directions -  
 Resistant to high temperatures up to 600°C, depending on the model.



## programme

AMELOCK		RESISTANCE to		USE
NUT	AMECOIL	TEMPERAT.	CORROSION	RECOMMENDED
Zinc plated and bichromate treated class 8 steel	Stainless steel Z10CN 18-09	300 °C	AVERAGE	With carbon steel or alloy steel screw
		125 °C	GOOD	
	Z10CN 18-09 Dry lubrication	300 °C	AVERAGE	With stainless steel screw
		125 °C	GOOD	
Stainless steel	Stainless steel Z10CN 18-09	350 °C	EXCELLENT	With carbon steel or alloy steel screw
Z10CN 18-09 AISI 303	Z10CN 18-09 Dry lubrication	350 °C	EXCELLENT	With stainless steel screw
Heat-resisting stainless steel Z6CNT 18-10 AISI 321	Inconel X750 + Argental	600 °C	EXCELLENT	With stainless steel screw