



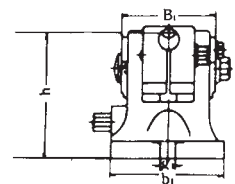
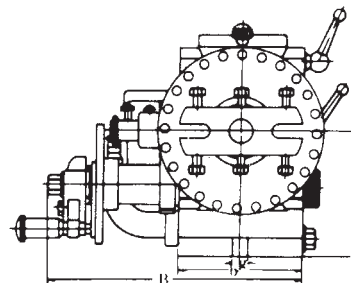
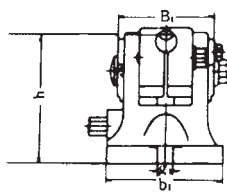
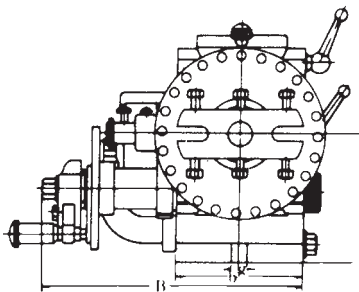
# Universal Dividing Head

ORDER NO.	WEIGHT	CODE.NO.
BS-2	65kgs	1001-052

## Standard Accessories



**THREAD SPINDLE: 2 1/4"-8TPI**



### Universal Index B & S Type No.2 (Head-stock)

Unit:mm/inches.

ORDER NO.	A	B	H	h	a	b	g	Taper of center	Spindle hole
BS-2	365 14 <sup>13</sup> / <sub>32</sub>	272 10 <sup>45</sup> / <sub>64</sub>	236 9 <sup>13</sup> / <sub>64</sub>	132.7 5 <sup>15</sup> / <sub>64</sub>	213 5 <sup>29</sup> / <sub>64</sub>	134 5 <sup>9</sup> / <sub>32</sub>	16 5/ <sub>8</sub>	MT-4	25.4 1

### BS-2(Tail-stock)

Unit:mm/inches.

ORDER NO.	A1	B1	H1	h1	a1	b1	g1
BS-2	205~255 8 <sup>5</sup> / <sub>64</sub> ~10 <sup>5</sup> / <sub>64</sub>	86 3 <sup>15</sup> / <sub>32</sub>	139 5 <sup>15</sup> / <sub>32</sub>	132.7 5 <sup>15</sup> / <sub>64</sub>	175 6 <sup>57</sup> / <sub>64</sub>	124 4 <sup>7</sup> / <sub>8</sub>	16 5/ <sub>8</sub>

ORDER NO.	Gross Weight kg	Meas. CFT	Applicable Chuck
BS-0	(C)20	0.8	4" OR 5"
BS-1	(C)33	1.3	5" OR 6"
BS-2	(C)65	3.4	6" ,7" OR 8"

### TEST REPORT

ITEM NO.	TESTING OBJECTIVE	VARIATION (INCHES)(MM) MAXIMUM TESTED	
1	TRUE RUNNING OF CENTER	0.0006(0.015)	
2	TRUE RUNNING OF INSIDE TAPER OF DIVIDING SPINDLE (1) MEASURED AT SPINDLE NOSE (2) MEASURED AT ARBOR 8-IN. LONG	(1)0.0004(0.01) (2)0.0012(0.03)	(1) (2)
3	AXIAL MOVEMENT OF DIVIDING SPINDLE	0.0004(0.01)	
4	DIVIDING ACCURACY OF WORM DRIVE MAXIMUM CUMULATIVE SPACING ERROR	1'30"	